

# **Many-task Computing:** Bridging the Gap between High-Throughput Computing and High-Performance Computing

**Ioan Raicu**

Distributed Systems Laboratory  
Computer Science Department  
University of Chicago

Department of Mathematics, Computer Science, and Statistics  
Purdue University Calumet  
March 3<sup>rd</sup>, 2009

# Acknowledgements

- Committee Members
  - Ian Foster (advisor)
  - Rick Stevens
  - Alex Szalay
- University of Chicago
  - Computer Science Department
  - Computational Institute
- Argonne National Laboratory
  - Math and Computer Science Division
  - Argonne Leadership Computing Facility
- NASA
  - Ames Research Center
  - Jerry C. Yan
- Over 60 collaborators

# Distributed Systems Laboratory

## University of Chicago

[http://dsl-wiki.cs.uchicago.edu/index.php/Main\\_Page](http://dsl-wiki.cs.uchicago.edu/index.php/Main_Page)

- Lead by Dr. Ian Foster
- Research Areas:
  - Distributed systems
  - Grid middleware
  - Grid applications
  - Designing, implementing, and evaluating systems, protocols, and applications
  - Data-intensive scientific computing
- People:
  - 1 faculty (Dr. Ian Foster)
  - 12 students
  - 2 research staff
  - 13 alumnis



# Computation Institute University of Chicago

<http://www.ci.uchicago.edu/index.php>

- People:

- Director: Ian Foster
- 70 faculty and scientists
- 30 full-time professional staff
- 14 graduate students

- Focus

- Deep Supercomputing
- Data Intensive Computing
- Next Generation Cybertools

- Many high-impact projects

- Open Science Grid
- TeraGrid
- Globus
- National Microbial Pathogen Research Center
- Social Informatics Data Grid
- Chicago Biomedical Consortium



# Math and Computer Science Div. Argonne National Laboratory

<http://www.mcs.anl.gov/index.php>

- People:

- Associate Director: Ian Foster
- Over 180 staff, researchers, scientists, developers

- Research Areas

- Algorithms, Software, and Applications
- Parallel Tools
- Distributed Systems Research
- Collaborative and Virtual Environments
- Computational Science

- Many high-impact projects

- TeraGrid (largest national cyber-infrastructure project)
- Globus Toolkit (defacto Grid Computing middleware)
- MPI (synonymous with HPC and Supercomputing)
- PVFS (scalable and high performance parallel file system)

Mathematics and Computer Science Division

The MCS Division is increasing scientific productivity in the 21st century by providing intellectual and technical leadership in the computing sciences.

Mathematics and Computer Science Division

The MCS Division is increasing scientific productivity in the 21st century by providing intellectual and technical leadership in the computing sciences.

# Argonne Leadership Computing Facility

## Argonne National Laboratory

<http://www.alcf.anl.gov/>

- People:

- Director: Pete Beckman

- Over 40 staff, researchers, scientists, developers

- Leadership class computing resources to scientific community

- Hosts the IBM Blue Gene/P supercomputer

- 500TF system

- #5 in Top500

Chip  
4 processors

13.6 GF/s  
8 MB EDRAM

13.6 GF/s  
2 GB DDR

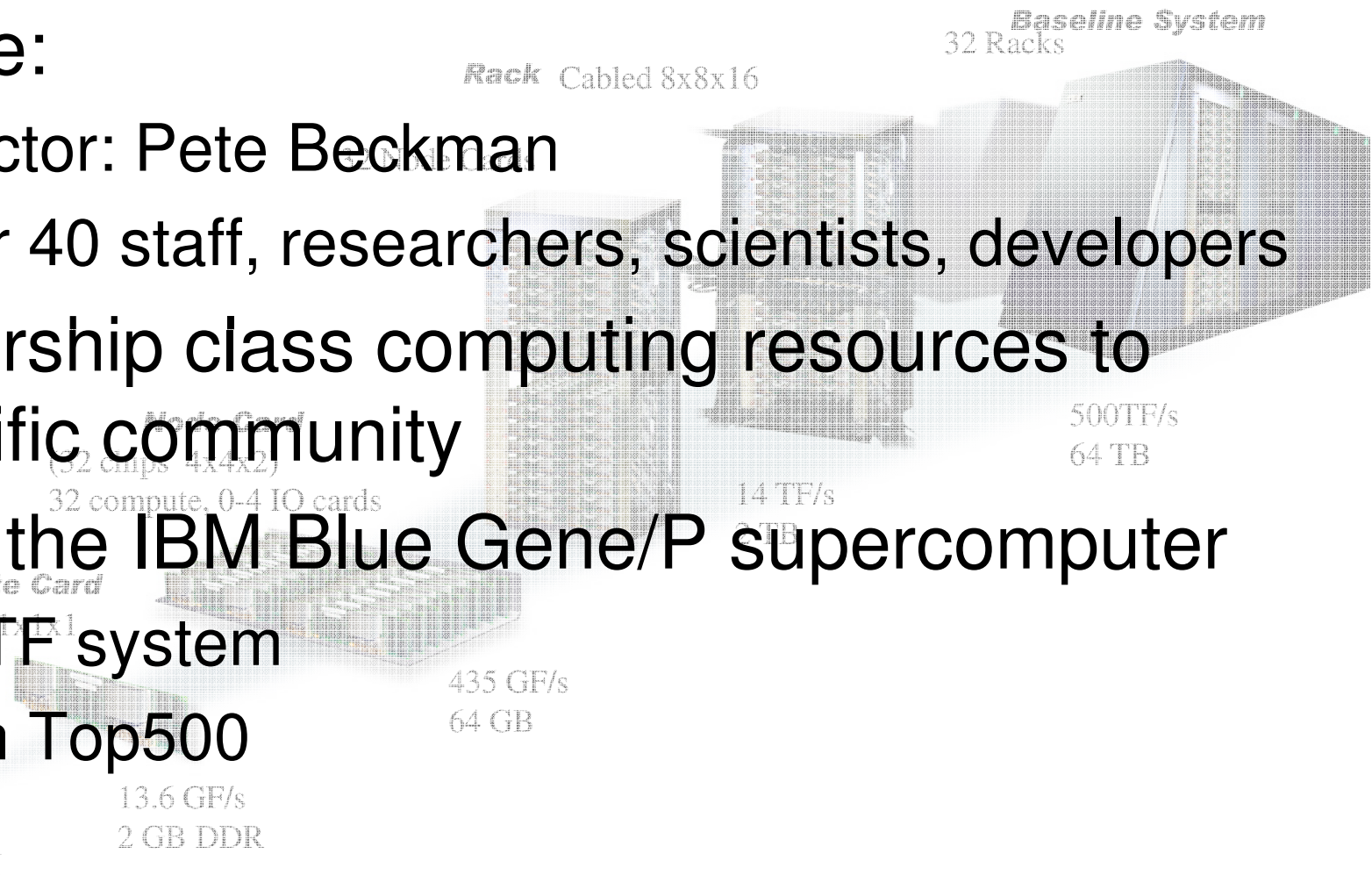
435 GF/s  
64 GB

14 TF/s  
2 TB

500TF/s  
64 TB

Rack Cabled 8x8x16

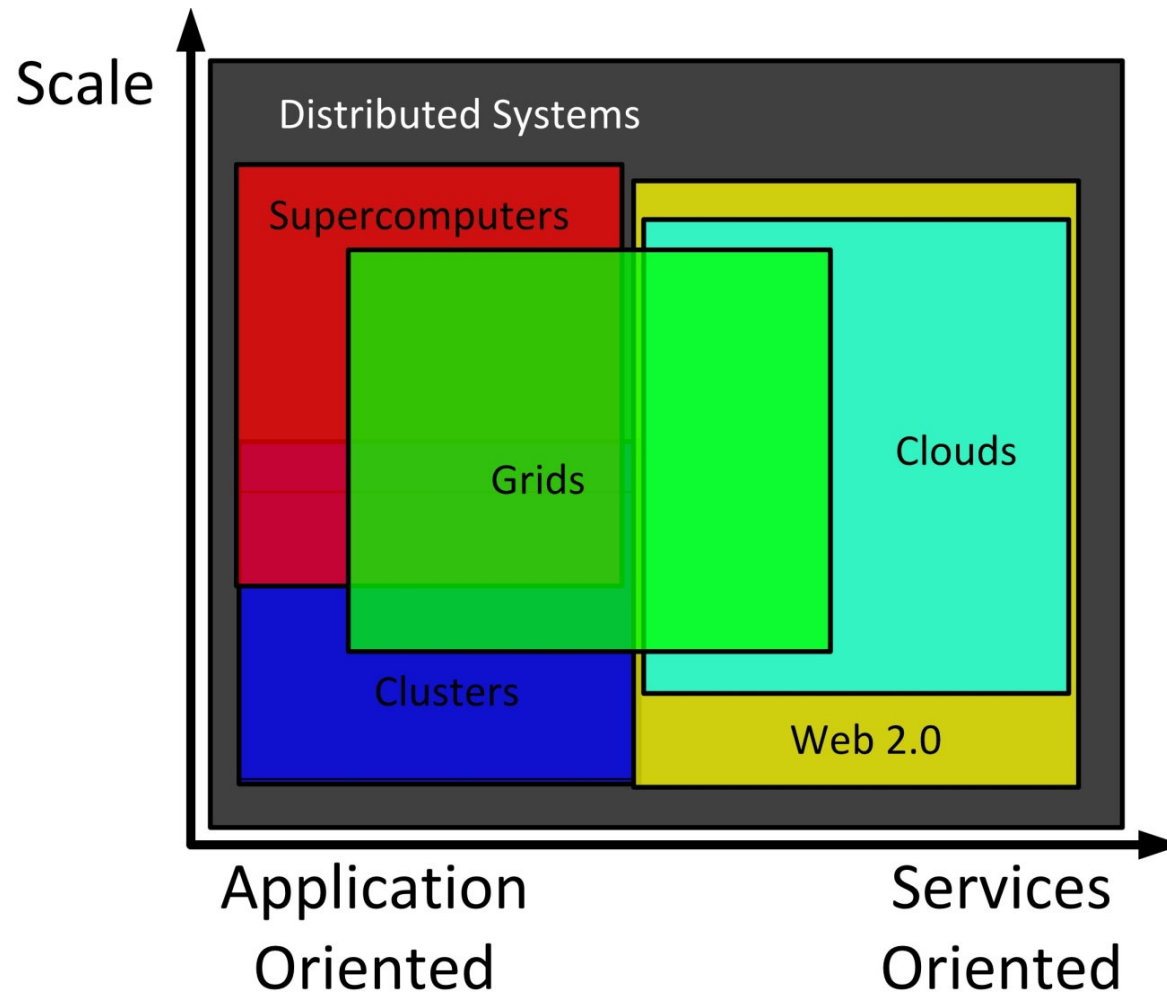
Baseline System  
32 Racks



# Distributed Resources

- UChicago CS (50+ machines over the UChicago campus)
- UChicago TeraPort (274-cores)
- UC/ANL Cluster (316 processors)
- PlanetLab (912 nodes at 470 sites all over the world)
- UChicago PADS (7TF, 512-cores)
- ANL SiCortex 5832 (6TF, 5832-cores)
- Open Science Grid (43K-cores across 80 institutions in the US)
- IBM Blue Gene/P Supercomputer at ANL (~500TF, 160K-cores)
- TeraGrid (161K-cores across 11 institutions and 22 systems over the US)
  - Includes a Sun Constellation supercomputer (~500TF, 62K-cores)

# Clusters, Grids, Supercomputers

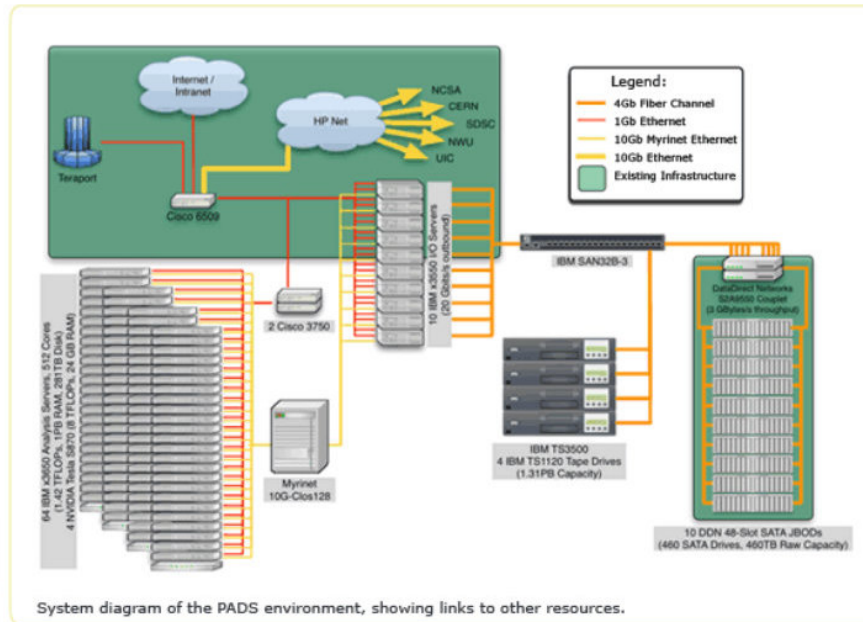




# Cluster Computing: PADS

## PADS

Computer clusters using commodity processors, network interconnects, and operating systems.



PADS is a petabyte ( $10^{15}$ -byte)-scale online storage server capable of sustained multi-gigabyte/s I/O performance, tightly integrated with a 9 teraflop/s computing resource and multi-gigabit/s local and wide area networks. Its hardware and associated software enables the reliable storage of, access to, and analysis of massive datasets by both local users and the national scientific community.

The PADS design results from a study of the storage and analysis requirements of participating groups in astrophysics and astronomy, computer science, economics, evolutionary and organismal biology, geosciences, high-energy physics, linguistics, materials science, neuroscience, psychology, and sociology. For these groups, PADS represents a significant opportunity to look at their data in new ways, enabling new scientific insights. The infrastructure also encourages new collaborations across disciplines. PADS is also a vehicle for computer science research into active data store systems, and provides rich data on which to investigate new techniques. Results will be made available as open source software.

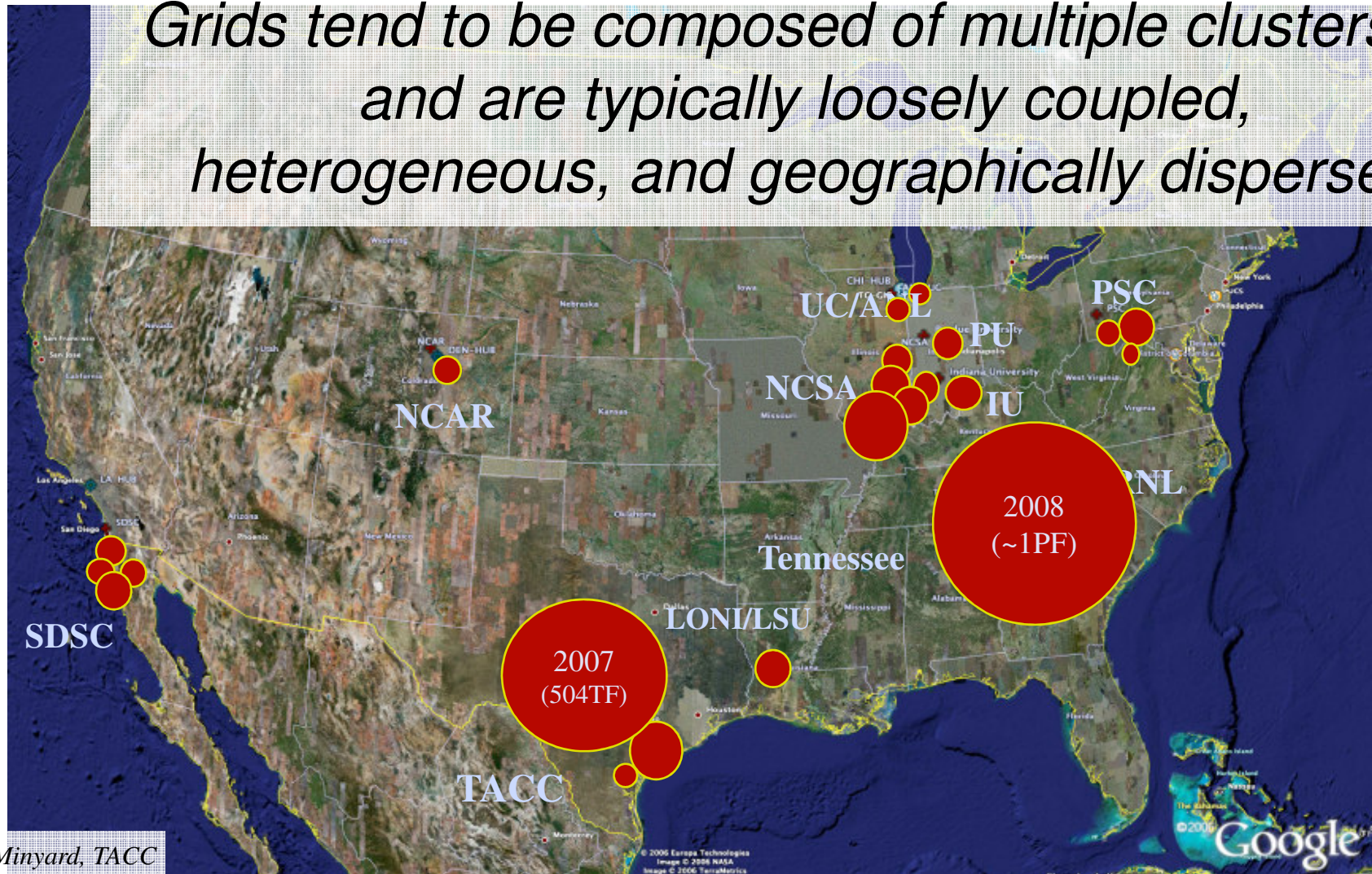
The PADS project is supported in part by the National Science Foundation under grant OCI-0821678 and by The University of Chicago.

[PADSstatus](#)

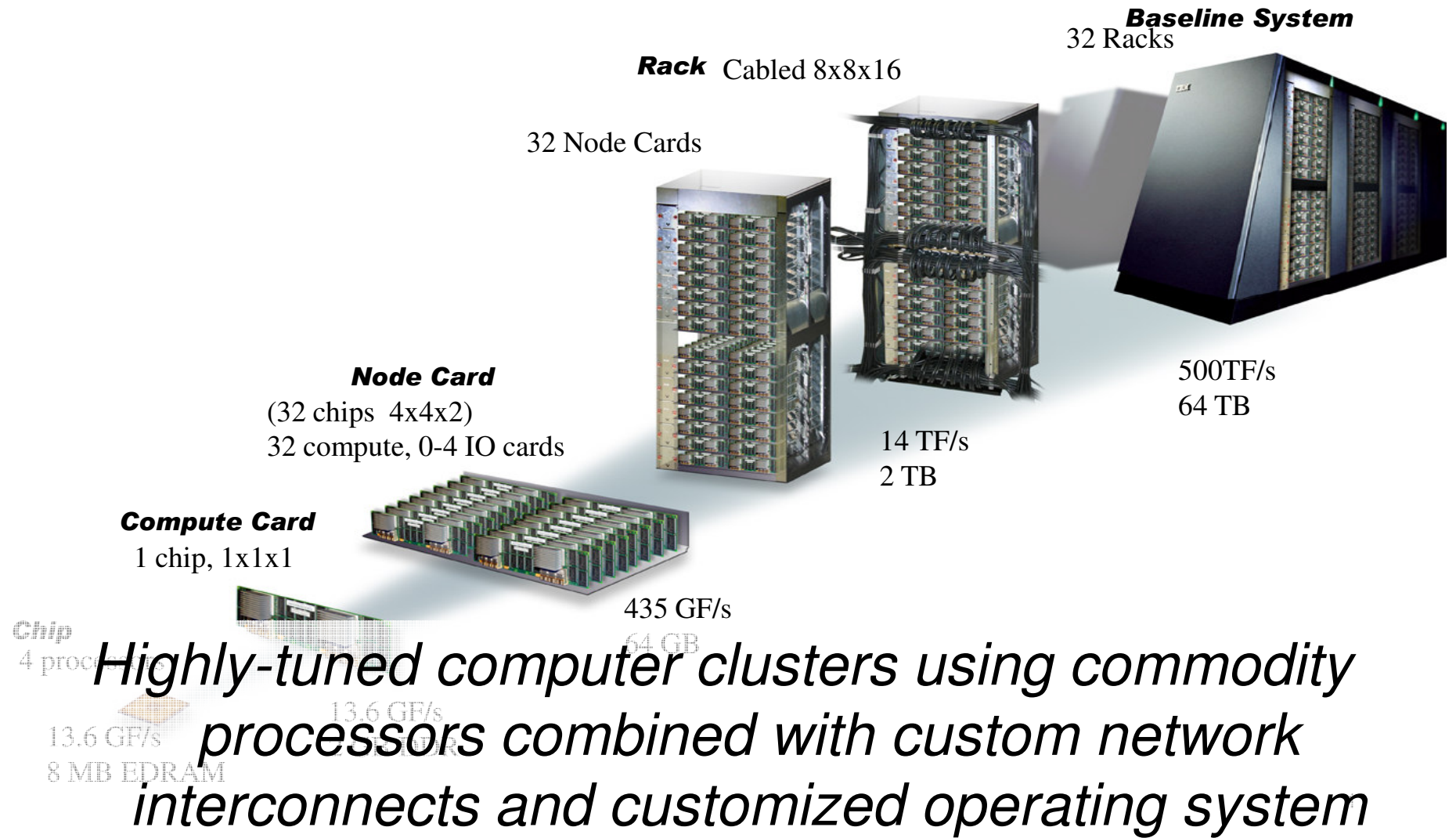
[myPADS](#)

# Grid Computing: TeraGrid

*Grids tend to be composed of multiple clusters, and are typically loosely coupled, heterogeneous, and geographically dispersed*



# Supercomputing: IBM Blue Gene/P



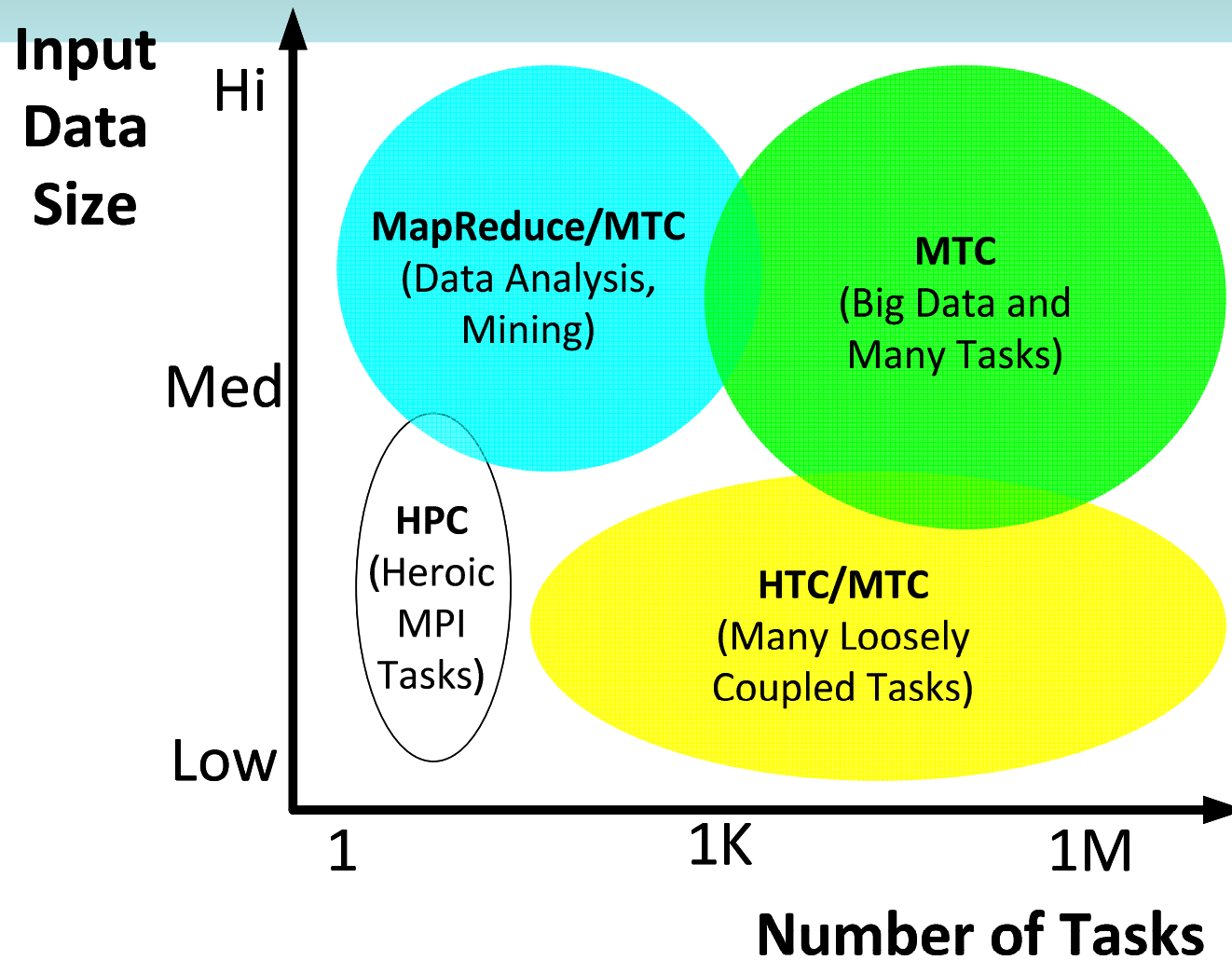
# High-Throughput Computing & High-Performance Computing

- HTC: High-Throughput Computing
  - Typically applied in clusters and grids
  - Loosely-coupled applications with sequential jobs
  - Large amounts of computing for long periods of times
  - Measured in operations per month or years
- HPC: High-Performance Computing
  - Synonymous with supercomputing
  - Tightly-coupled applications
  - Implemented using Message Passing Interface (MPI)
  - Large of amounts of computing for short periods of time
  - Usually requires low latency interconnects
  - Measured in FLOPS

# MTC: Many-Task Computing

- Bridge the gap between HPC and HTC
- Applied in clusters, grids, and supercomputers
- Loosely coupled apps with HPC orientations
- Many activities coupled by file system ops
- Many resources over short time periods
  - Large number of tasks, large quantity of computing, and large volumes of data

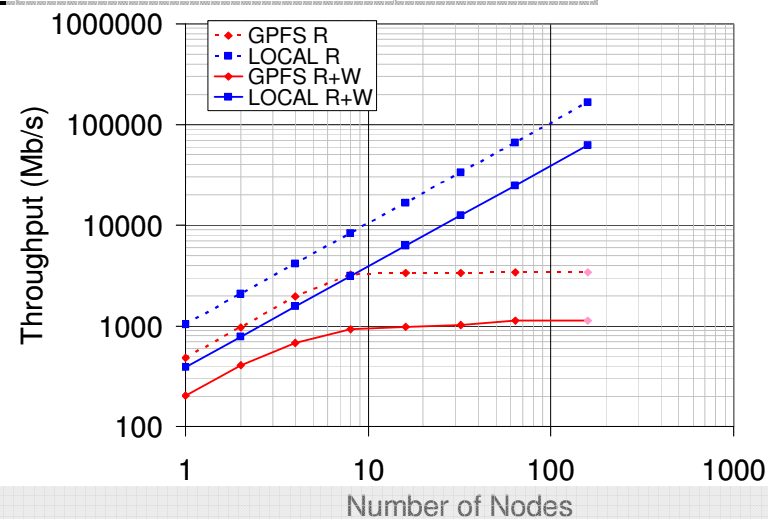
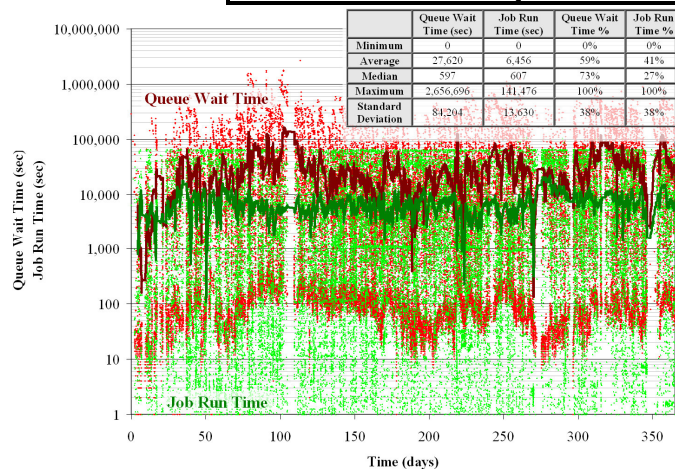
# Problem Space



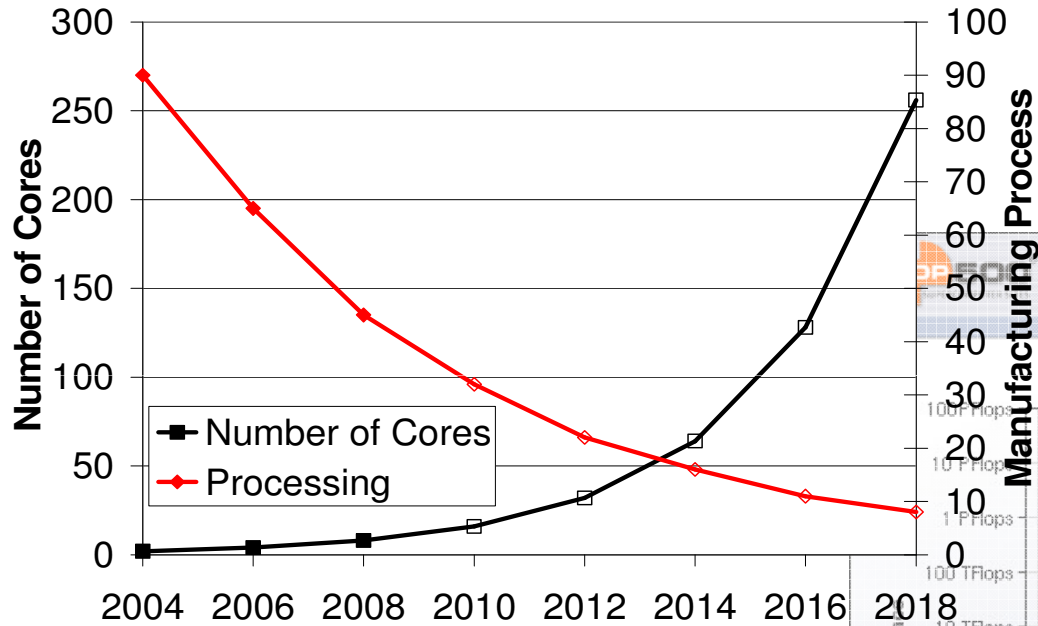
# Challenges for MTC

1. Slow job dispatch rates
2. Long queue times
3. Poor shared/parallel file system scaling

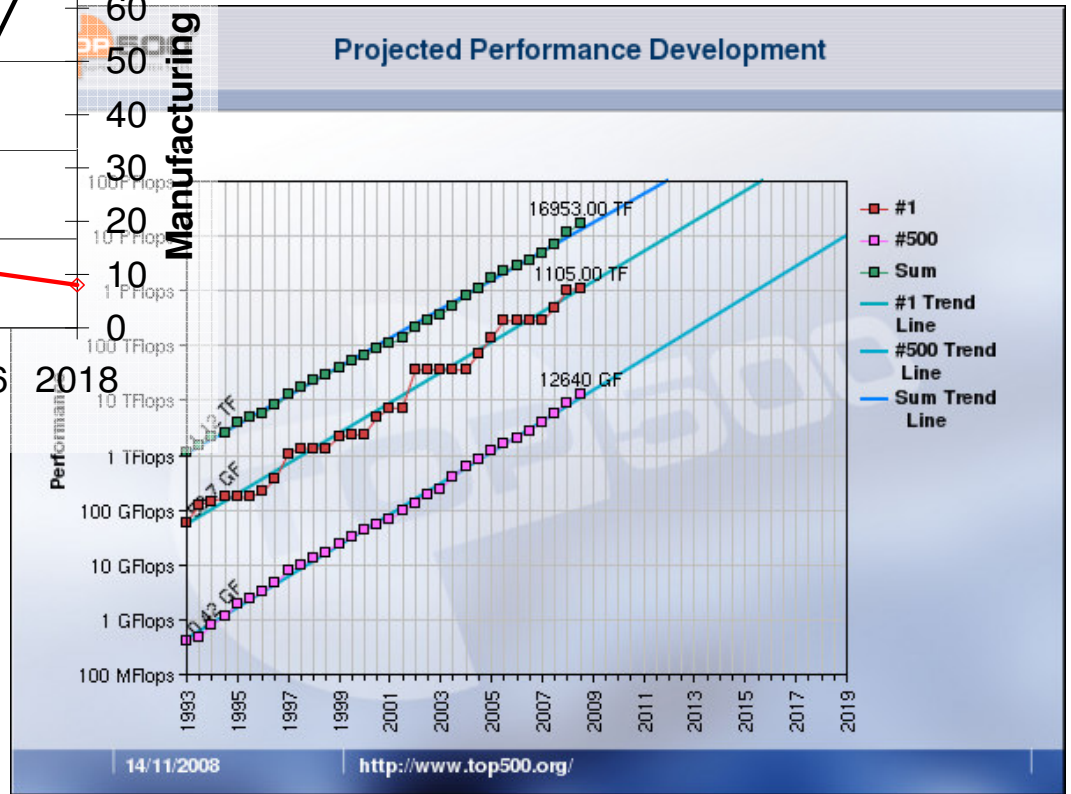
System	Comments	Throughput (tasks/sec)
<b>Condor (v6.7.2) - Production</b>	Dual Xeon 2.4GHz, 4GB	0.49
<b>PBS (v2.1.8) - Production</b>	Dual Xeon 2.4GHz, 4GB	0.45
<b>Condor (v6.7.2) - Production</b>	Quad Xeon 3 GHz, 4GB	2
<b>Condor (v6.8.2) - Production</b>		0.42
<b>Condor (v6.9.3) - Development</b>		11
<b>Condor-J2 - Experimental</b>	Quad Xeon 3 GHz, 4GB	22



# Projected Growth Trends



Pat Helland, Microsoft, The Irresistible Forces Meet the Movable Objects, November 9<sup>th</sup>, 2007



Top500 Projected Development,

[http://www.top500.org/lists/2008/11/performance\\_development](http://www.top500.org/lists/2008/11/performance_development)



# Growing Storage/Compute Gap

- Local Disk:

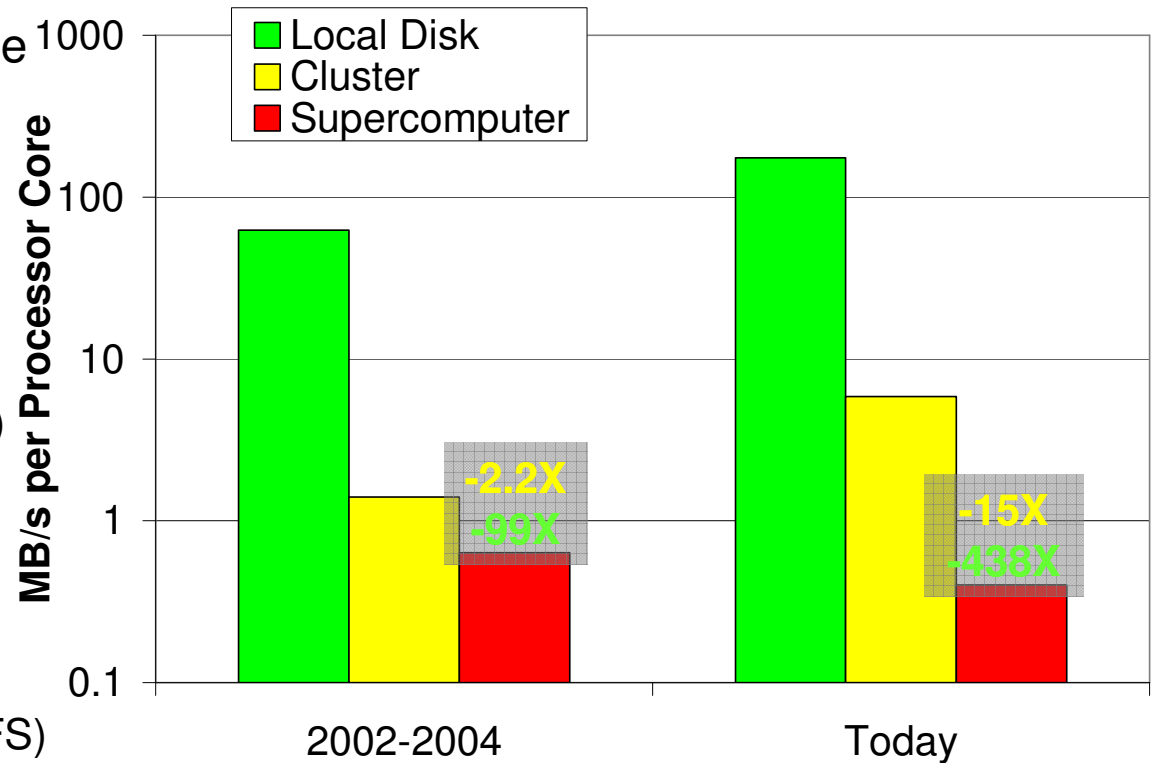
- 2002-2004: ANL/UC TG Site (70GB SCSI)
- Today: PADS (RAID-0, 6 drives 750GB SATA)

- Cluster:

- 2002-2004: ANL/UC TG Site (GPFS, 8 servers, 1Gb/s each)
- Today: PADS (GPFS, SAN)

- Supercomputer:

- 2002-2004: IBM Blue Gene/L (GPFS)
- Today: IBM Blue Gene/P (GPFS)



# Presentation Focus

- [JS09] “Middleware Support for Many-Task Computing”, under preparation
- [HPDC09] “The Quest for Scalable Support of Data Intensive Workloads in Distributed Systems”, under review
- [DIDC09] “Towards Data Intensive Many-Task Computing” , under review
- [SC08] “Towards Loosely-Coupled Programming on Petascale Systems”
- [MTAGS08 Workshop] Workshop on Many-Task Computing on Grids and Supercomputers
- [MTAGS08] “Many-Task Computing for Grids and Supercomputers”
- [MTAGS08] “Design and Evaluation of a Collective I/O Model for Loosely-coupled Petascale Programming”
- [GCE08] “Cloud Computing and Grid Computing 360-Degree Compared”
- [SWF08] “Scientific Workflow Systems for 21st Century e-Science, New Bottle or New Wine?”
- [DADC08] “Accelerating Large-scale Data Exploration through Data Diffusion”
- [TG08] “Data Intensive Scalable Computing on TeraGrid: A Comparison of MapReduce and Swift”
- [GlobusWorld08] “Managing and Executing Loosely Coupled Large Scale Applications on Clusters, Grids, and Supercomputers”
- [NOVA08] “Realizing Fast, Scalable and Reliable Scientific Computations in Grid Environments”
- [UC07] “Harnessing Grid Resources with Data-Centric Task Farms”
- [Globus07] “Falkon: A Proposal for Project Globus Incubation”
- [SC07] “Falkon: a Fast and Light-weight task execution framework”
- [MSES07] “A Data Diffusion Approach to Large Scale Scientific Exploration”
- [SWF07] “Swift: Fast, Reliable, Loosely Coupled Parallel Computation”
- [TG07] “Dynamic Resource Provisioning in Grid Environments”
- [NASA06-08] “Harnessing Grid Resources to Enable the Dynamic Analysis of Large Astronomy Datasets”
- [SC06] “Harnessing Grid Resources to Enable the Dynamic Analysis of Large Astronomy Datasets”
- [TG06] “AstroPortal: A Science Gateway for Large-scale Astronomy Data Analysis”
- [NSF06] “The Importance of Data Locality in Distributed Computing Applications”

# Techniques to Support MTC

- Streamlined task dispatching
- Dynamic resource provisioning
  - Multi-level scheduling
  - Resources are acquired/released in response to demand
- Data diffusion
  - Data diffuses from archival storage to transient resources
  - Resource “caching” allows faster responses to subsequent requests
  - Co-locate data and computations to optimize performance

[SC08] “Towards Loosely-Coupled Programming on Petascale Systems”

[DADC08] “Accelerating Large-scale Data Exploration through Data Diffusion”

[UC07] “Harnessing Grid Resources with Data-Centric Task Farms”

[SC07] “Falkon: a Fast and Light-weight task executiON framework”

[TG07] “Dynamic Resource Provisioning in Grid Environments”

# Theoretical and Practical Exploration

- Abstract model
  - Models the efficiency and speedup of entire workloads
  - Captures techniques to support MTC
    - Streamlined task dispatching
    - Dynamic resource provisioning
    - Data diffusion
- Middleware to support MTC
  - Falkon: a fast a light-weight execution framework
  - Reference Implementation of the abstract model

[JS09] "Middleware Support for Many-Task Computing", under preparation

[DIDC09] "Towards Data Intensive Many-Task Computing", under review

[SC07] "Falkon: a Fast and Light-weight task executiON framework"

# Middleware Support: Falkon

- **Goal:** enable the *rapid and efficient* execution of many independent jobs on large compute clusters
- Combines three components:
  - a *streamlined task dispatcher*
  - *resource provisioning* through multi-level scheduling techniques
  - *data diffusion* and data-aware scheduling to leverage the co-located computational and storage resources
- Integration into Swift to leverage many applications
  - Applications cover many domains: astronomy, astro-physics, medicine, chemistry, economics, climate modeling, etc

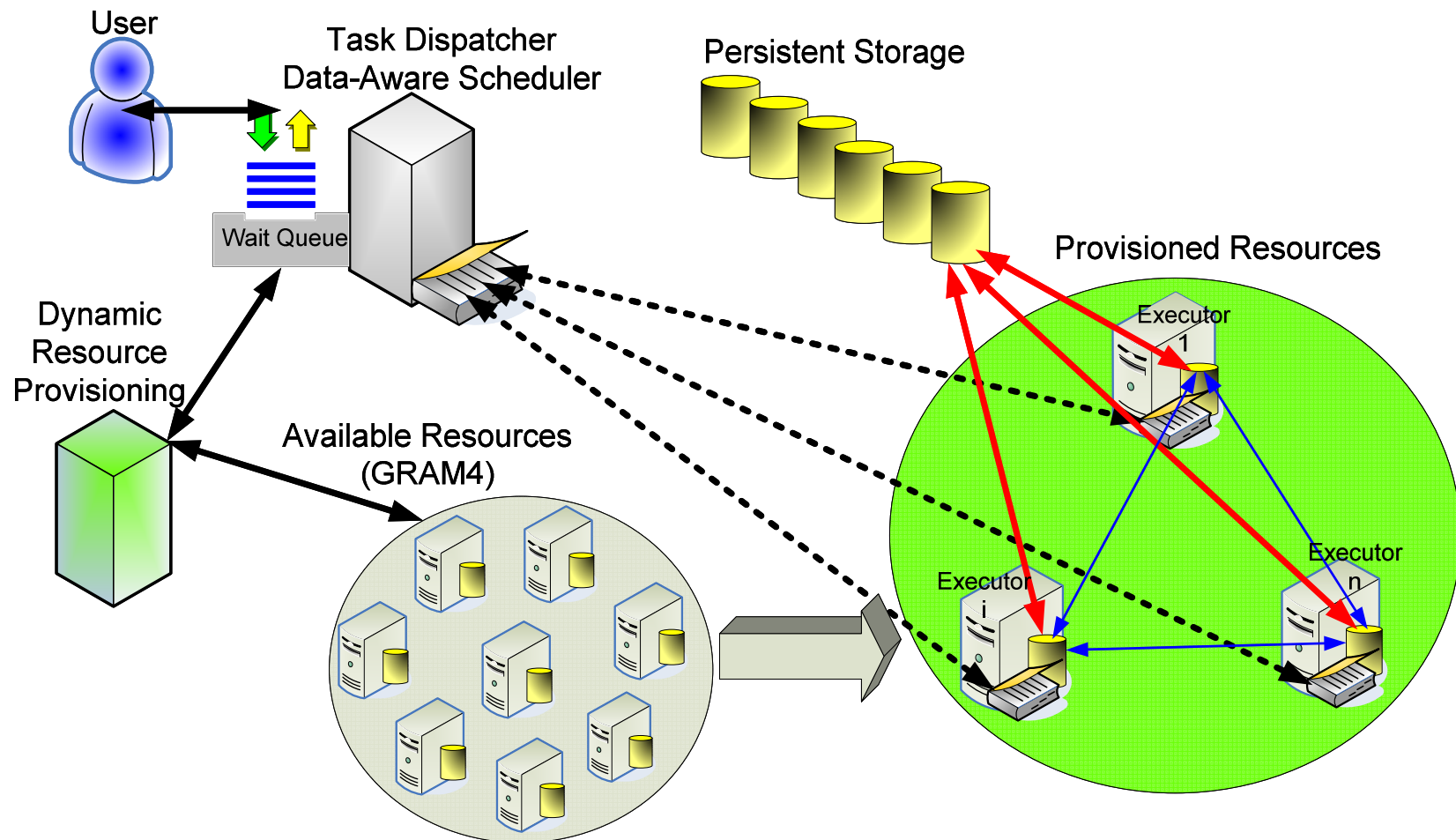
[SC08] "Towards Loosely-Coupled Programming on Petascale Systems"

[Globus07] "Falkon: A Proposal for Project Globus Incubation"

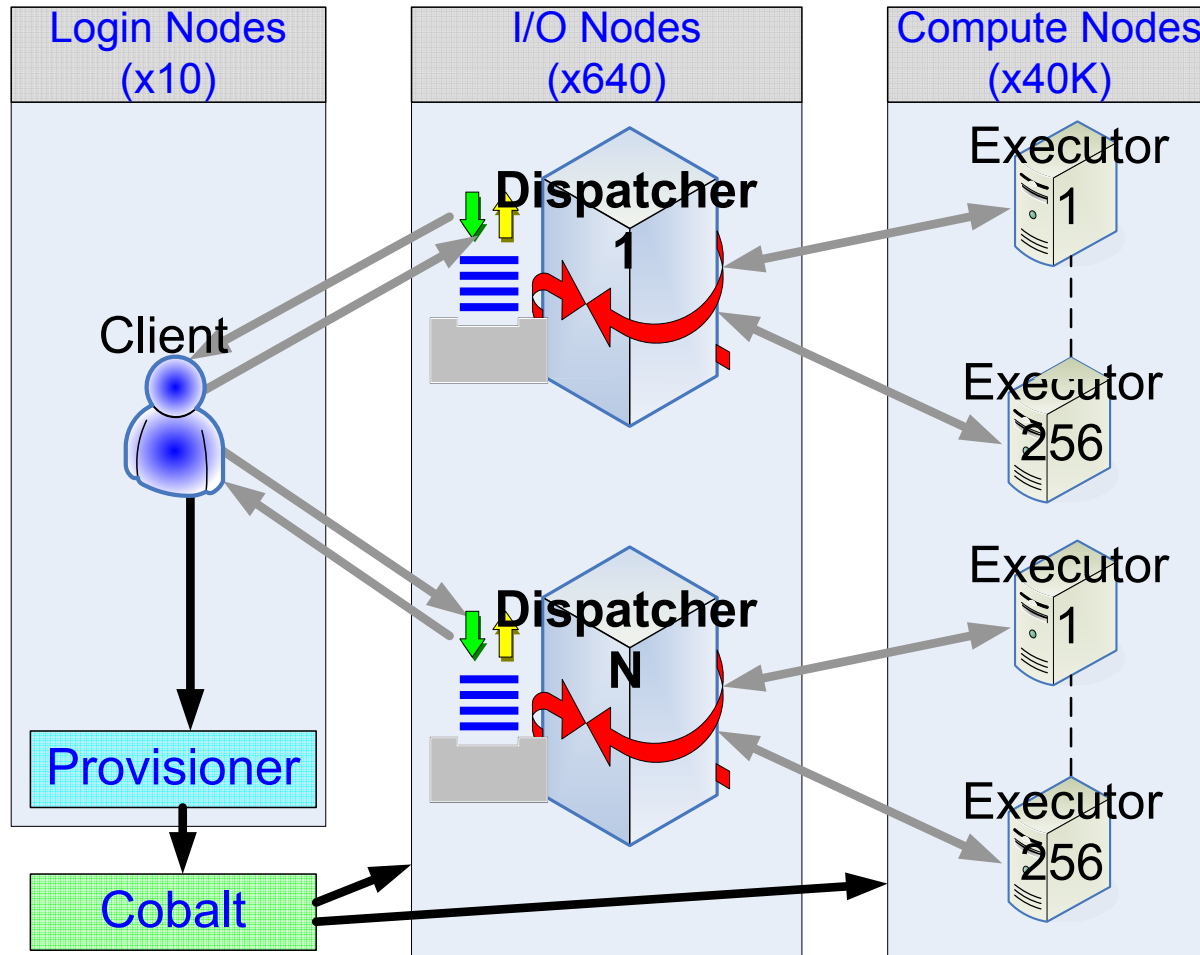
[SC07] "Falkon: a Fast and Light-weight task executiON framework"

[SWF07] "Swift: Fast, Reliable, Loosely Coupled Parallel Computation"

# Falkon Architecture



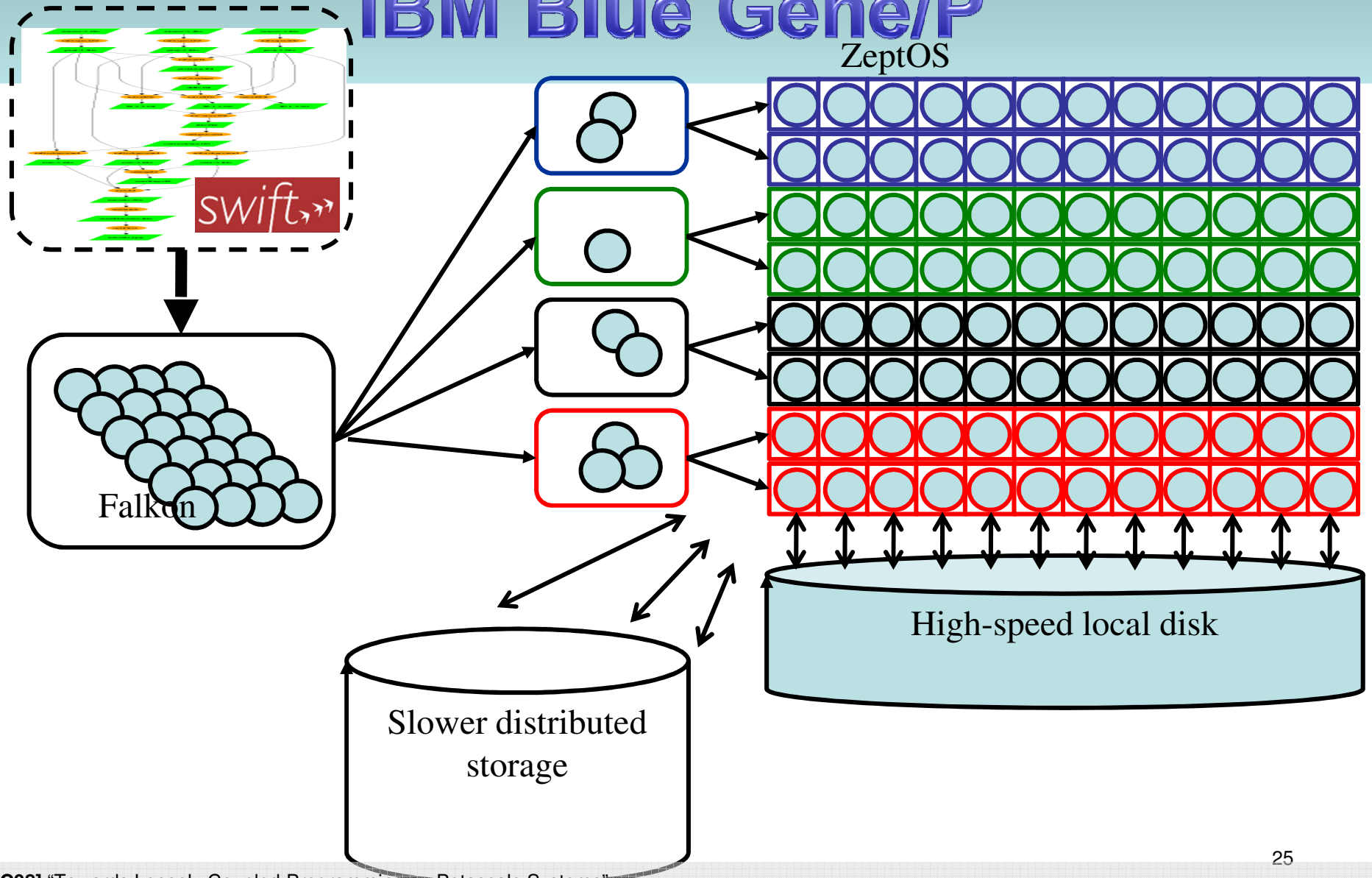
# Distributed Falkon Architecture



# Managing 160K CPUs

## IBM Blue Gene/P

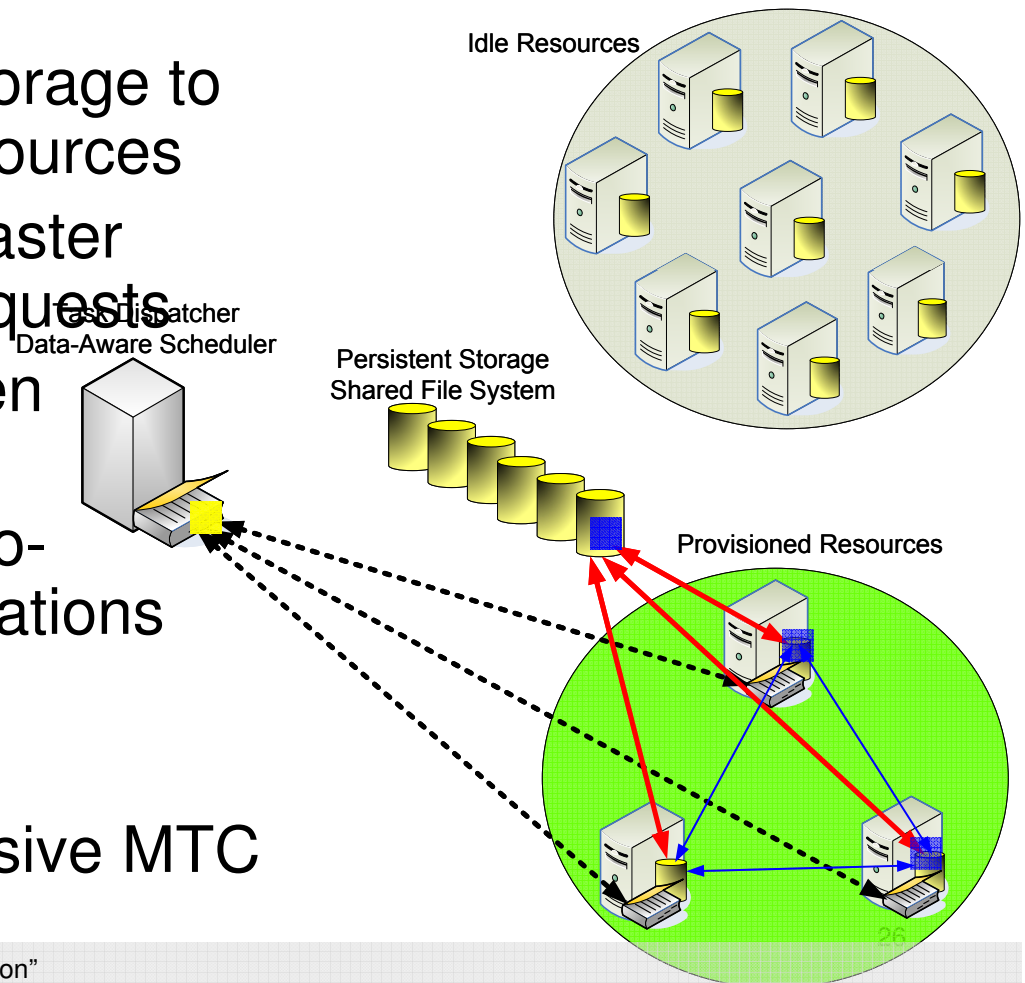
ZeptOS



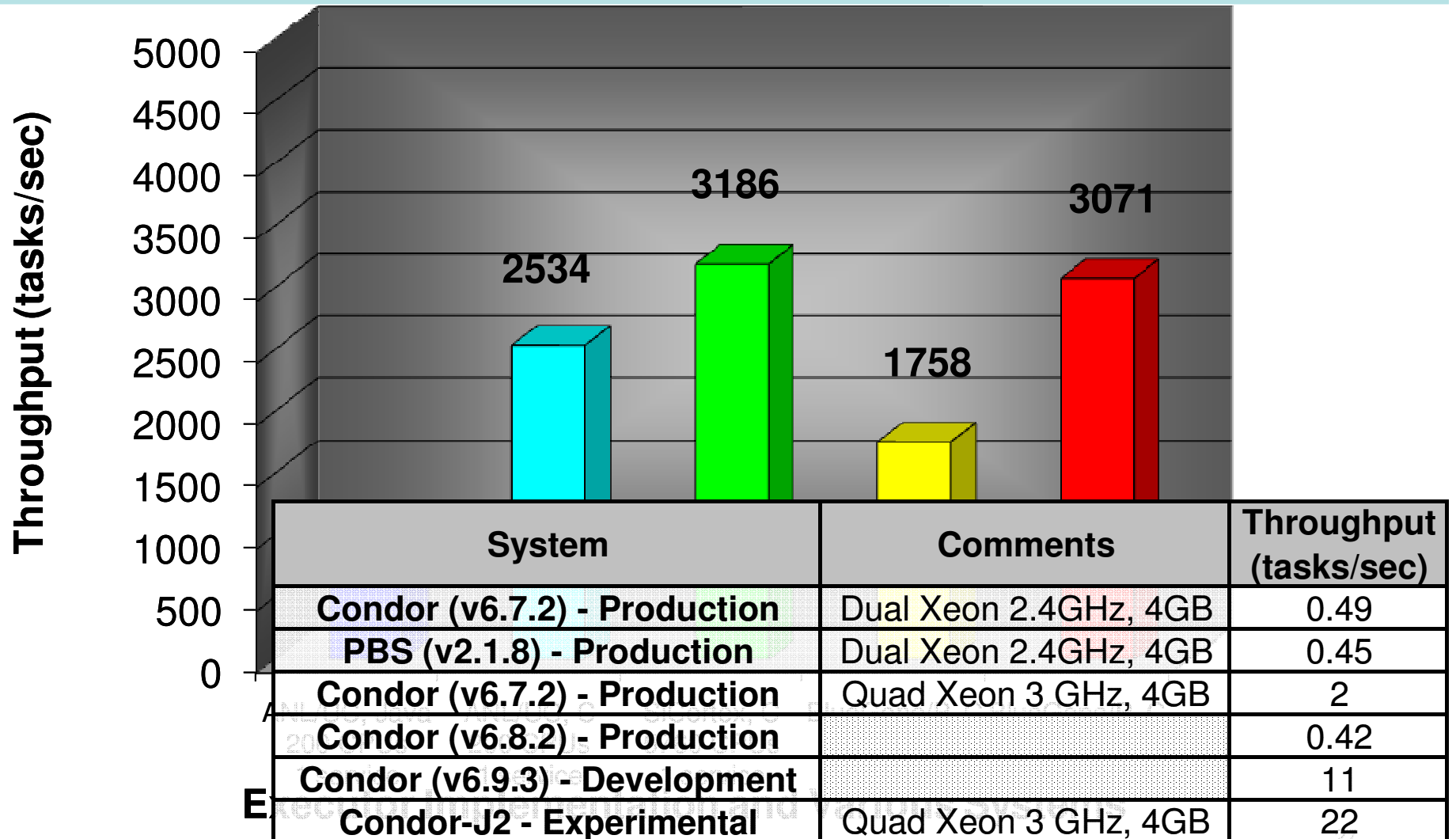


# Data Diffusion

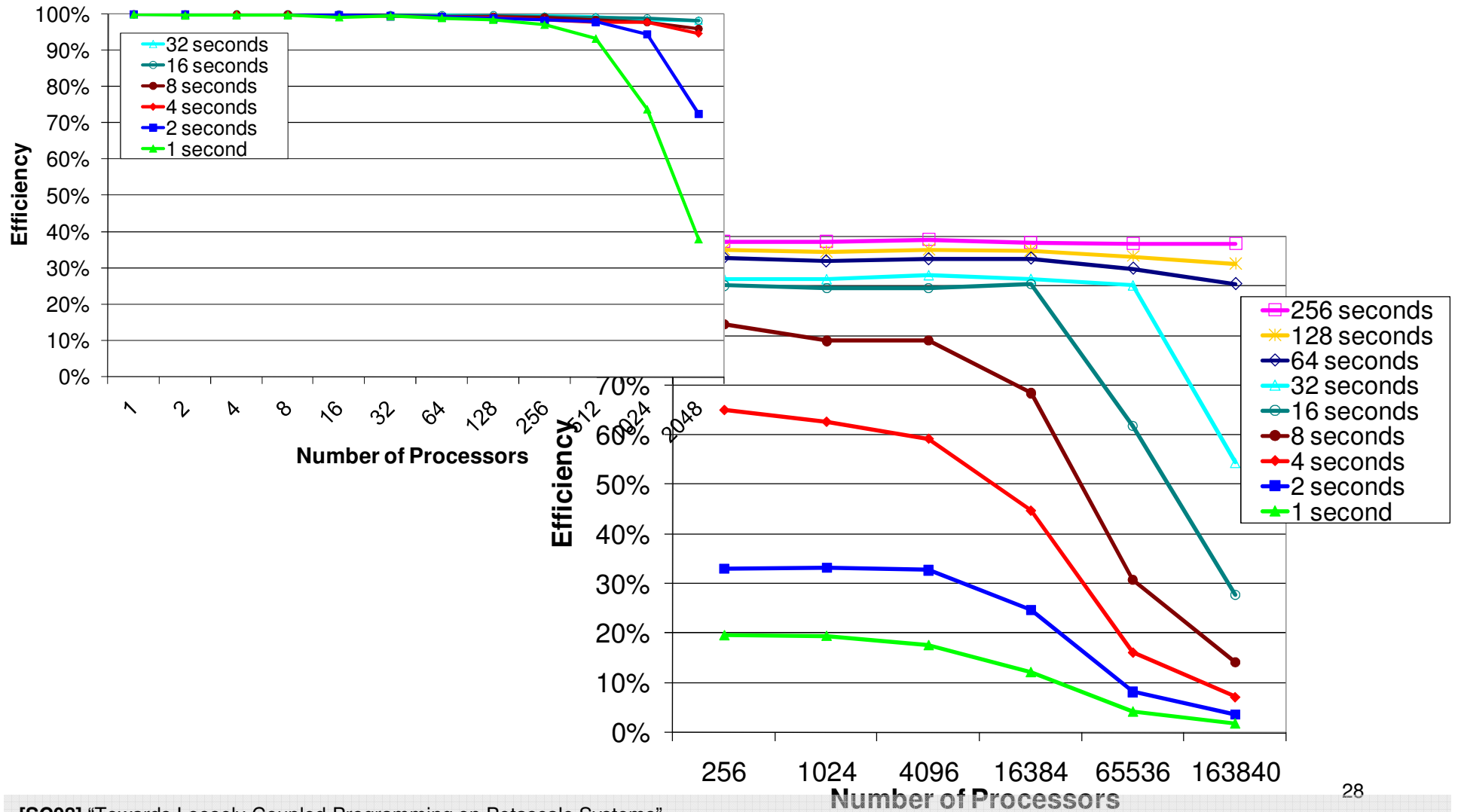
- Resource acquired in response to demand
- Data diffuse from archival storage to newly acquired transient resources
- Resource “caching” allows faster responses to subsequent requests
- Resources are released when demand drops
- Optimizes performance by co-scheduling data and computations
- Decrease dependency of a shared/parallel file systems
- Critical to support data intensive MTC



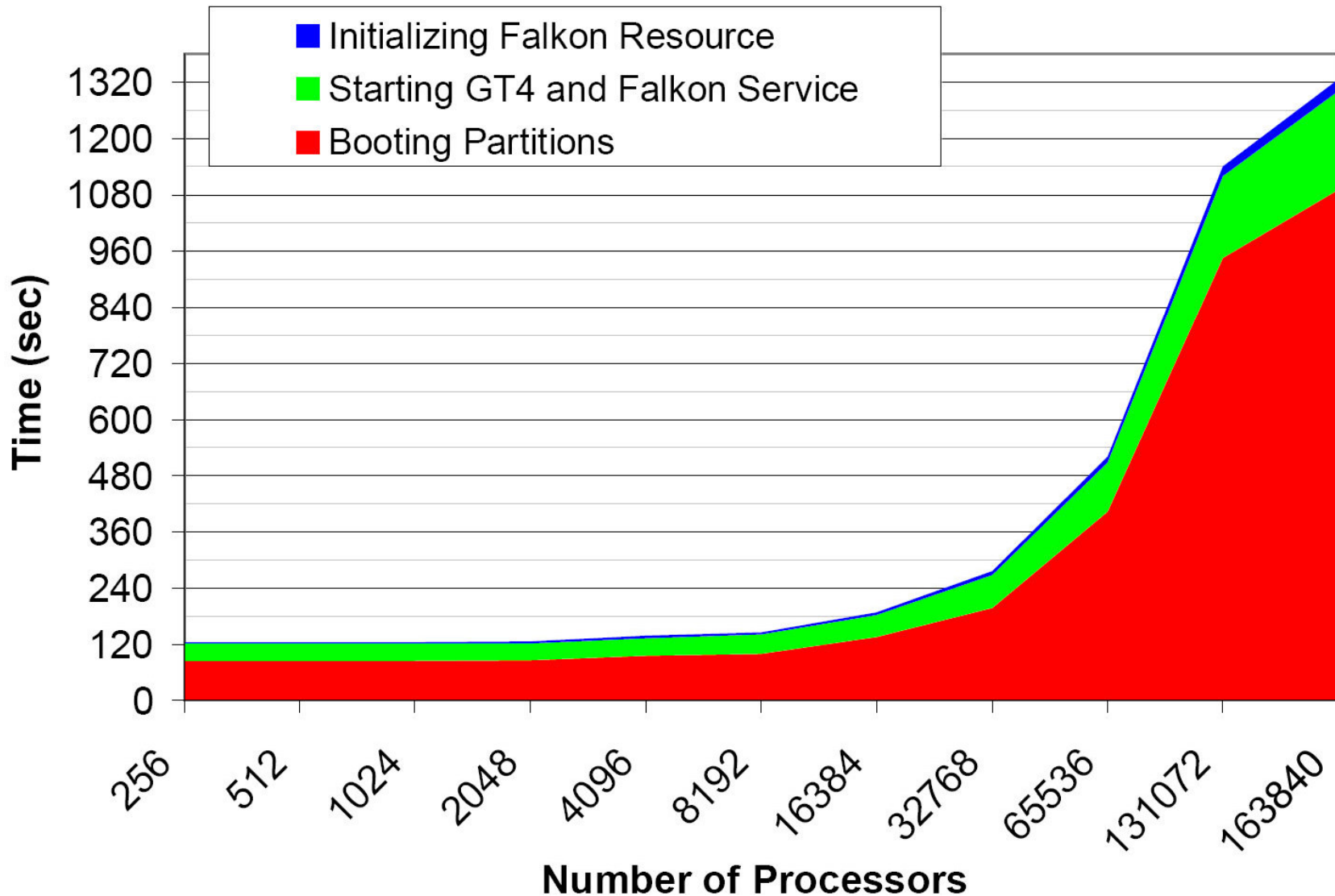
# Dispatch Throughput



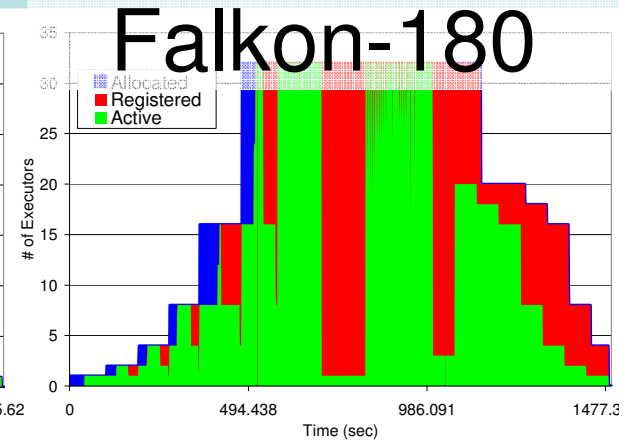
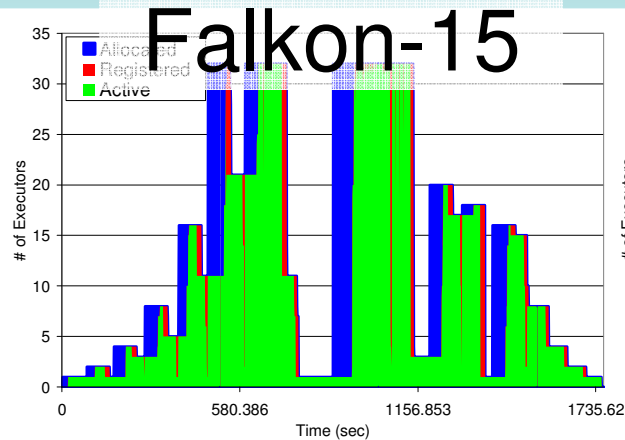
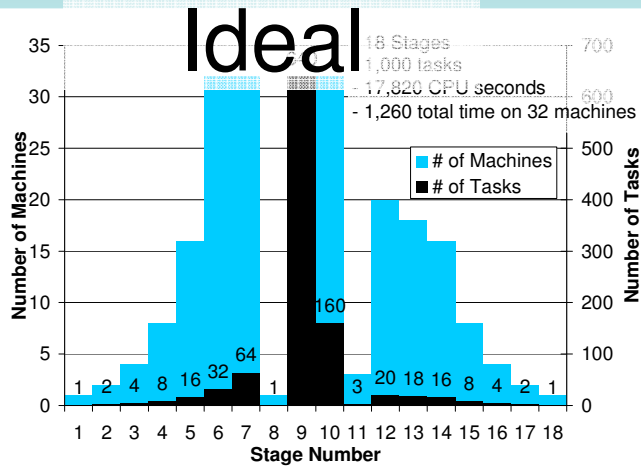
# Execution Efficiency



# Resource Provisioning Overheads IBM Blue Gene/P



# Dynamic Resource Provisioning



- End-to-end execution time:
  - 1260 sec in ideal case
  - 4904 sec → 1276 sec
- Average task queue time:
  - 42.2 sec in ideal case
  - 611 sec → 43.5 sec
- Trade-off:
  - Resource Utilization for Execution Efficiency

	GRAM +PBS	Falkon-15	Falkon-60	Falkon-120	Falkon-180	Falkon-∞	Ideal (32 nodes)
Queue Time (sec)	611.1	87.3	83.9	74.7	44.4	43.5	42.2
Execution Time (sec)	56.5	17.9	17.9	17.9	17.9	17.9	17.8
Execution Time %	8.5%	17.0%	17.6%	19.3%	28.7%	29.2%	29.7%
	GRAM +PBS	Falkon-15	Falkon-60	Falkon-120	Falkon-180	Falkon-∞	Ideal (32 nodes)
Time to complete (sec)	4904	1754	1680	1507	1484	1276	1260
Resource Utilization	30%	89%	75%	65%	59%	44%	100%
Execution Efficiency	26%	72%	75%	84%	85%	99%	100%
Resource Allocations	1000	11	9	7	6	0	0

# Scheduling Policies

- FA: first-available
  - simple load balancing
- MCH: max-cache-hit
  - maximize cache hits
- MCU: max-compute-util
  - maximize processor utilization
- GCC: good-cache-compute
  - maximize both cache hit and processor utilization at the same time

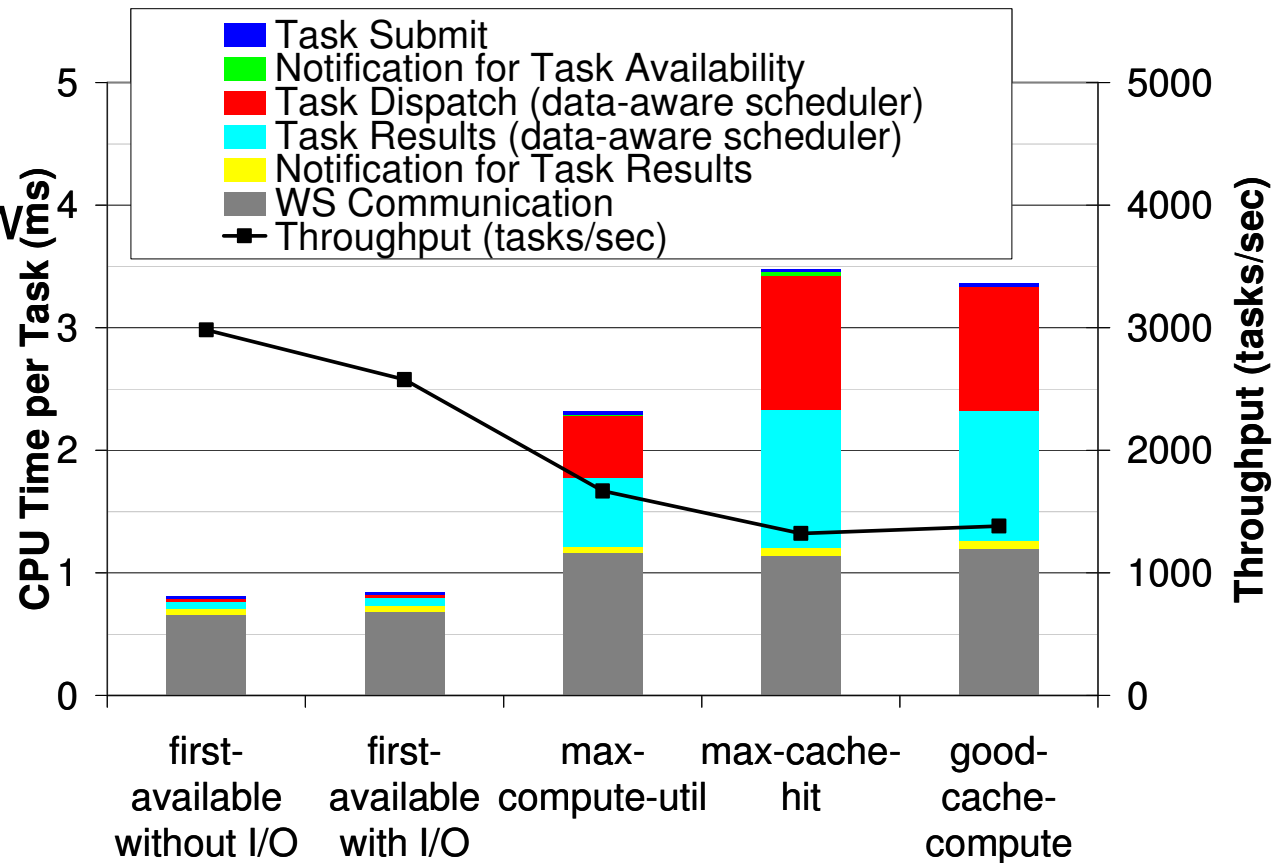
[DADC08] “Accelerating Large-scale Data Exploration through Data Diffusion”

[HPDC09] “The Quest for Scalable Support of Data Intensive Applications in Distributed Systems”, under review

[DIDC09] “Towards Data Intensive Many-Task Computing”, under review

# Data-Aware Scheduler Profiling

- 3GHz dual CPUs
- ANL/UC TG with 128 processors
- Scheduling window 2500 tasks
- Dataset
  - 100K files
  - 1 byte each
- Tasks
  - Read 1 file
  - Write 1 file



# Synthetic Workloads

- Monotonically Increasing Workload
  - Emphasizes increasing loads
- Sine-Wave Workload
  - Emphasizes varying loads
- All-Pairs Workload
  - Compare to best case model of active storage
- Image Stacking Workload (Astronomy)
  - Evaluate data diffusion on a real large-scale data-intensive application from astronomy domain

[DADC08] “Accelerating Large-scale Data Exploration through Data Diffusion”

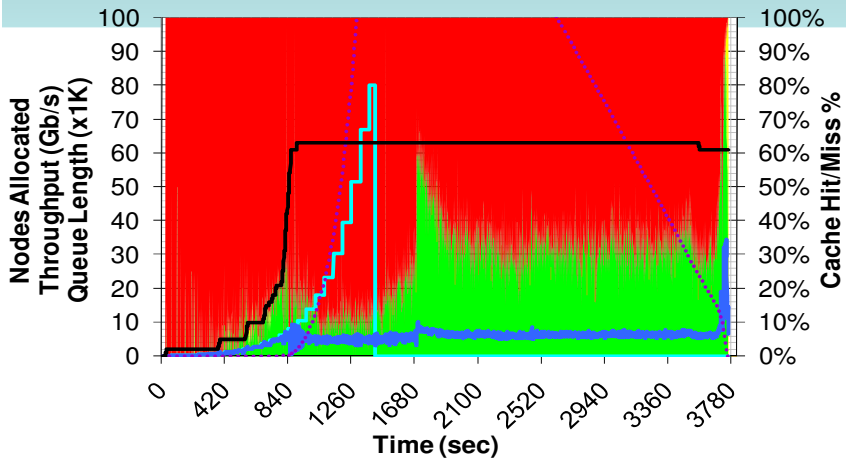
[HPDC09] “The Quest for Scalable Support of Data Intensive Applications in Distributed Systems”, under review

[DIDC09] “Towards Data Intensive Many-Task Computing”, under review

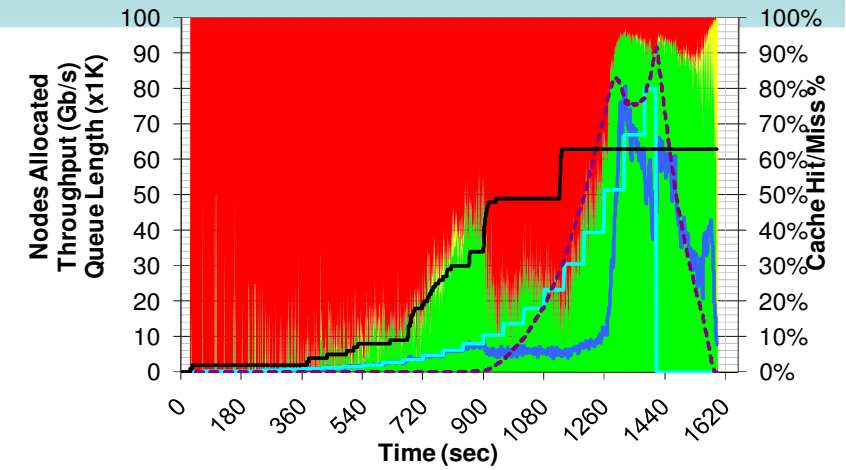


# Data Diffusion

## Monotonically Increasing Workload

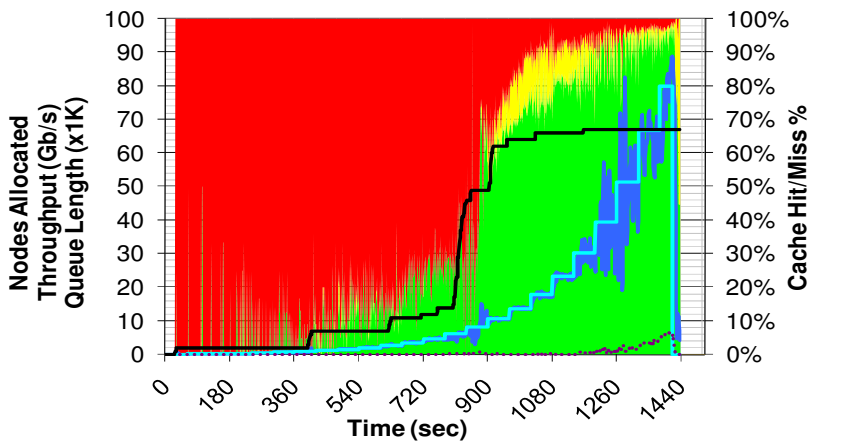


← 1GB  
1.5GB →

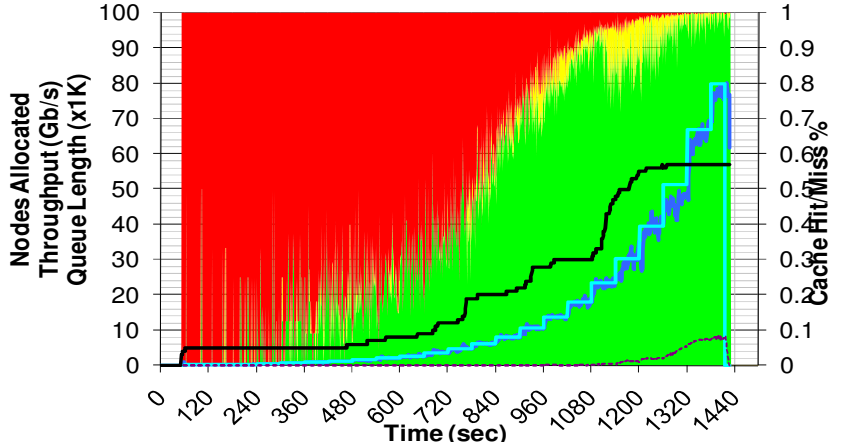


■ Cache Miss %    ■ Cache Hit Global %    ■ Cache Hit Local %  
— Demand (Gb/s)    — Throughput (Gb/s)    - - - Wait Queue Length  
— Number of Nodes

■ Cache Miss %    ■ Cache Hit Global %    ■ Cache Hit Local %  
— Throughput (Gb/s)    — Demand (Gb/s)    - - - Wait Queue Length  
— Number of Nodes



← 2GB  
4GB →

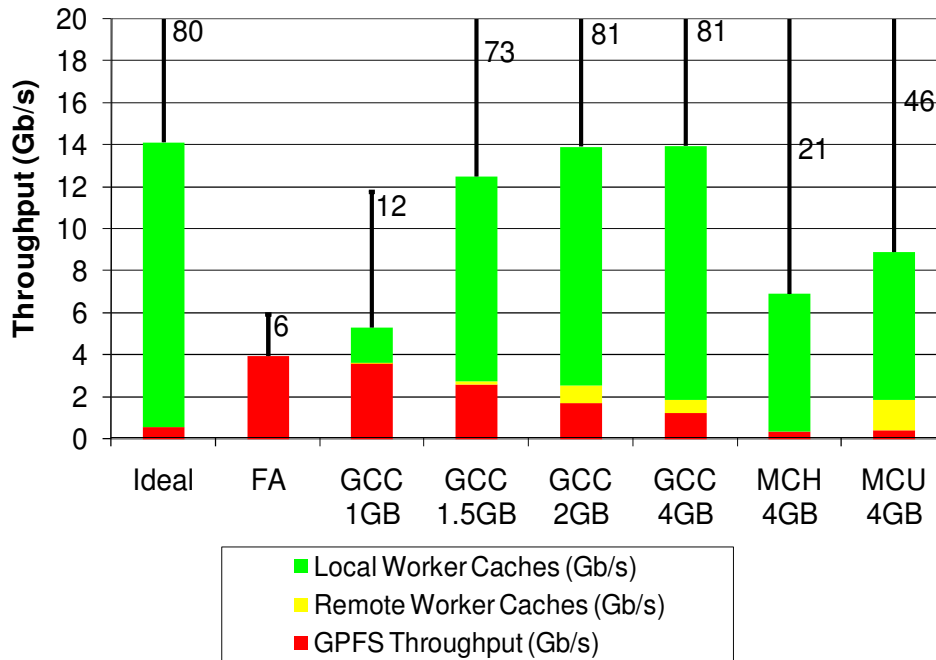


■ Cache Miss %    ■ Cache Hit Global %    ■ Cache Hit Local %  
— Throughput (Gb/s)    — Demand (Gb/s)    - - - Wait Queue Length  
— Number of Nodes

■ Cache Miss %    ■ Cache Hit Global %    ■ Cache Hit Local %  
— Throughput (Gb/s)    — Demand (Gb/s)    - - - Wait Queue Length  
— Number of Nodes

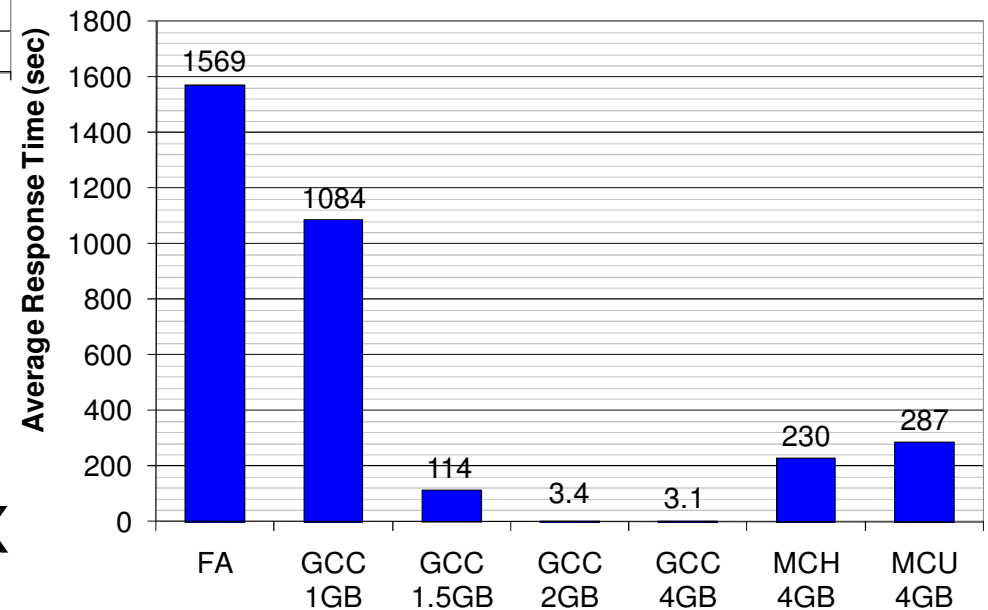
# Data Diffusion

## Monotonically Increasing Workload



← Throughput:

- Average: 14Gb/s vs 4Gb/s
- Peak: 81Gb/s vs. 6Gb/s



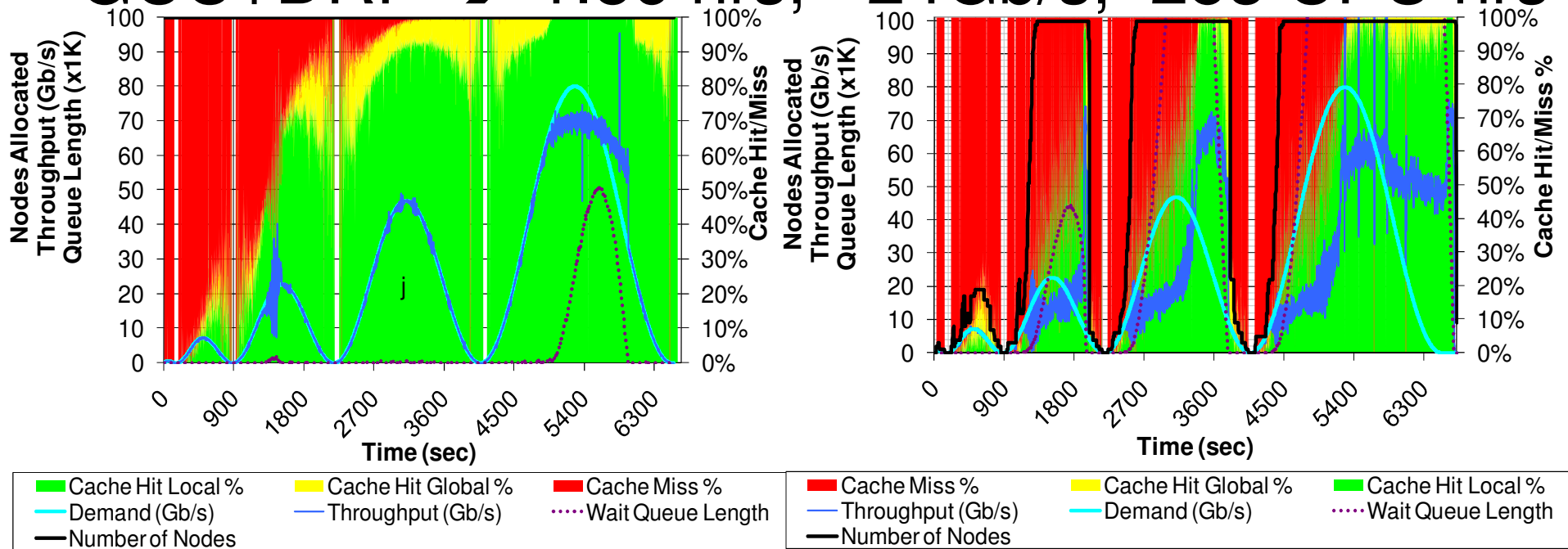
Response Time →

– 3 sec vs 1569 sec → 506X

# Data Diffusion

## Sine-Wave Workload

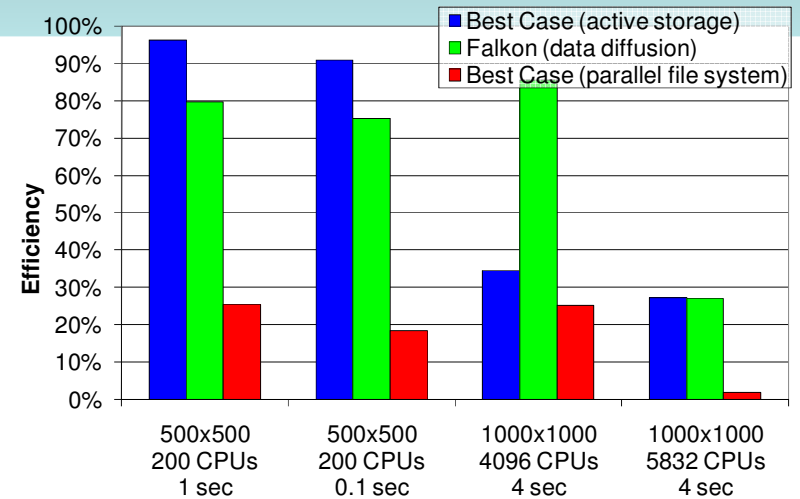
- GPFS → 5.7 hrs, ~8Gb/s, 1138 CPU hrs
- GCC+SRP → 1.8 hrs, ~25Gb/s, 361 CPU hrs
- GCC+DRP → 1.86 hrs, ~24Gb/s, 253 CPU hrs



# Data Diffusion vs. Active Storage

## All-Pairs Workload

- Pull vs. Push
  - Data Diffusion
    - Pulls *task* working set
    - Incremental spanning forest
  - Active Storage:
    - Pushes *workload* working set to all nodes
    - Static spanning tree



Experiment				
Experiment	Approach	Local Disk/Memory (GB)	Network (node-to-node) (GB)	Shared File System (GB)
500x500 200 CPUs 1 sec	Best Case (active storage)	6000	1536	12
	Falkon (data diffusion)	6000	1698	34
500x500 200 CPUs 0.1 sec	Best Case (active storage)	6000	1536	12
	Falkon (data diffusion)	6000	1528	62
1000x1000 4096 CPUs 4 sec	Best Case (active storage)	24000	12288	24
	Falkon (data diffusion)	24000	4676	384
1000x1000 5832 CPUs 4 sec	Best Case (active storage)	24000	12288	24
	Falkon (data diffusion)	24000	3867	906

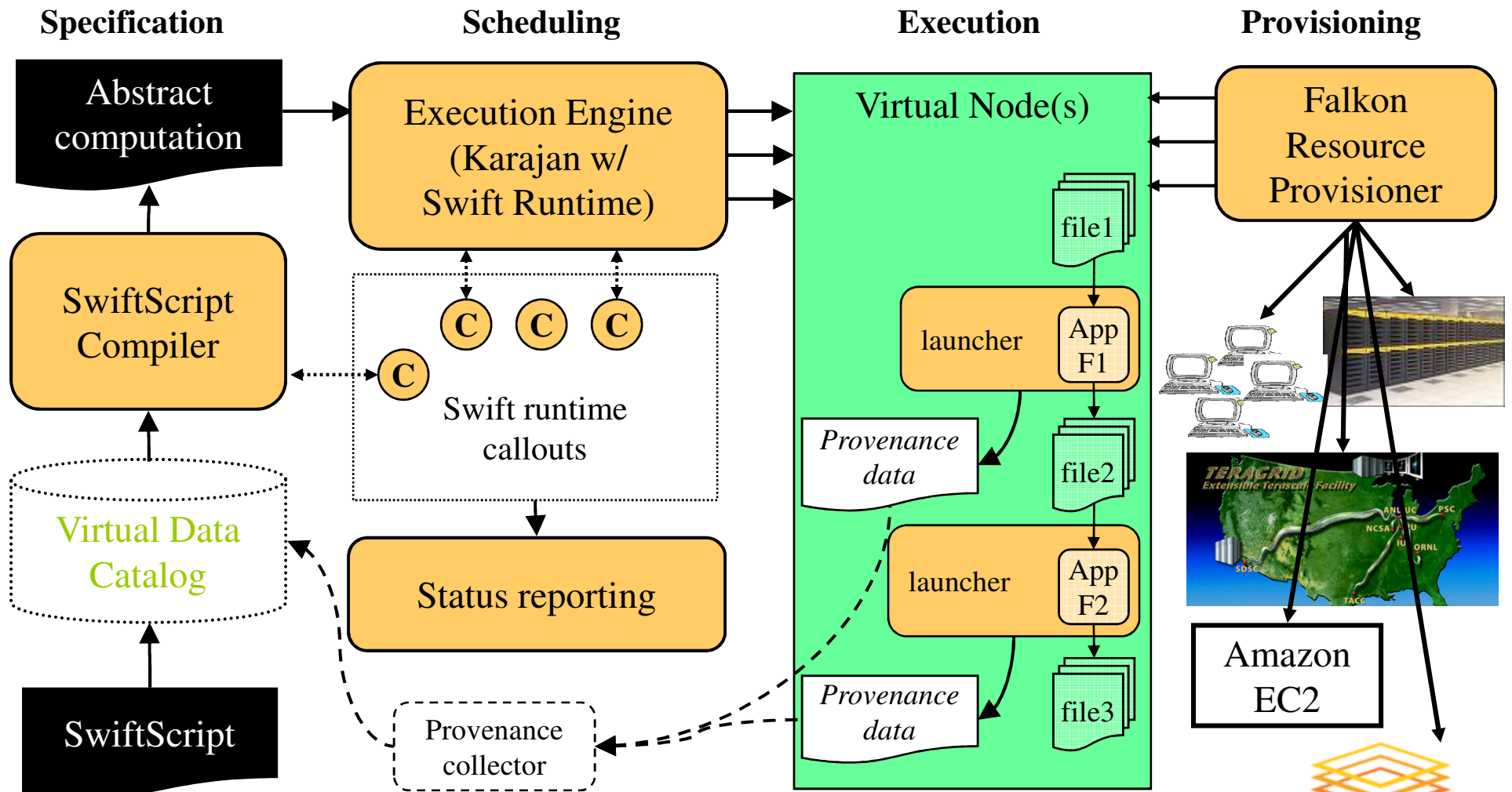
**Christopher Moretti, Douglas Thain,  
University of Notre Dame**

# Data Diffusion vs. Active Storage

## All-Pairs Workload

- Best to use active storage if
  - Slow data source
  - Workload working set fits on local node storage
- Best to use data diffusion if
  - Medium to fast data source
  - Task working set  $\ll$  workload working set
  - Task working set fits on local node storage
- If task working set does not fit on local node storage
  - Use parallel file system (i.e. GPFS, Lustre, PVFS, etc)

# Applications Swift Architecture

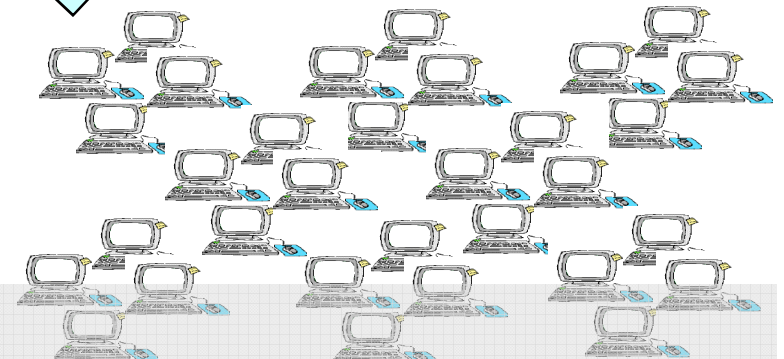
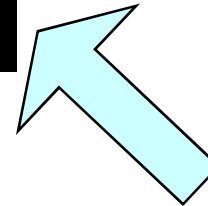
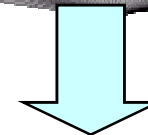
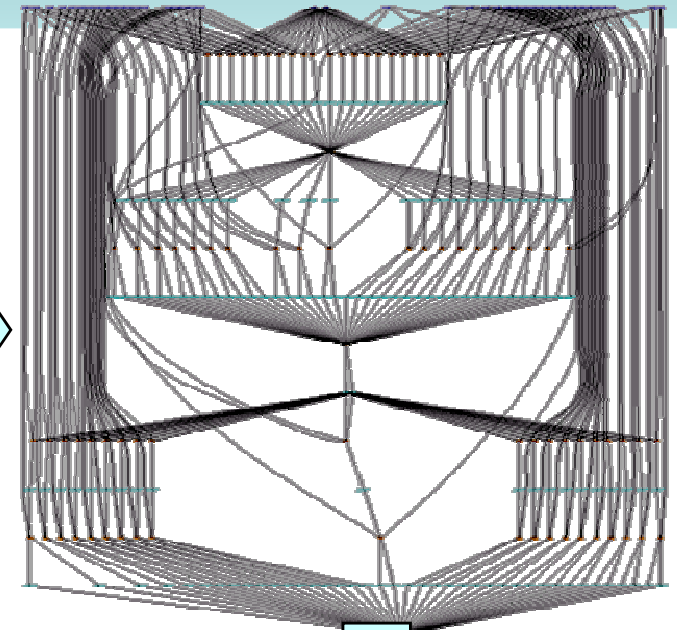
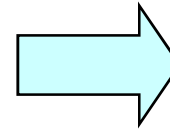
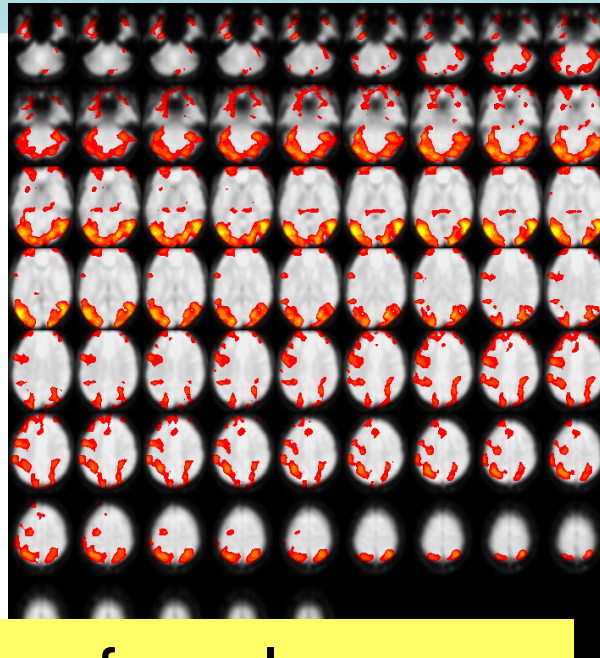
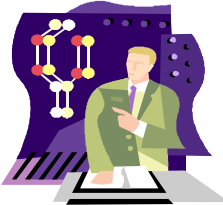


[NOVA08] "Realizing Fast, Scalable and Reliable Scientific Computations in Grid Environments"

[SWF07] "Swift: Fast, Reliable, Loosely Coupled Parallel Computation"

# Applications

## Medical Imaging: fMRI



- Wide range of analyses
  - Testing, interactive analysis, production runs
  - Data mining
  - Parameter studies

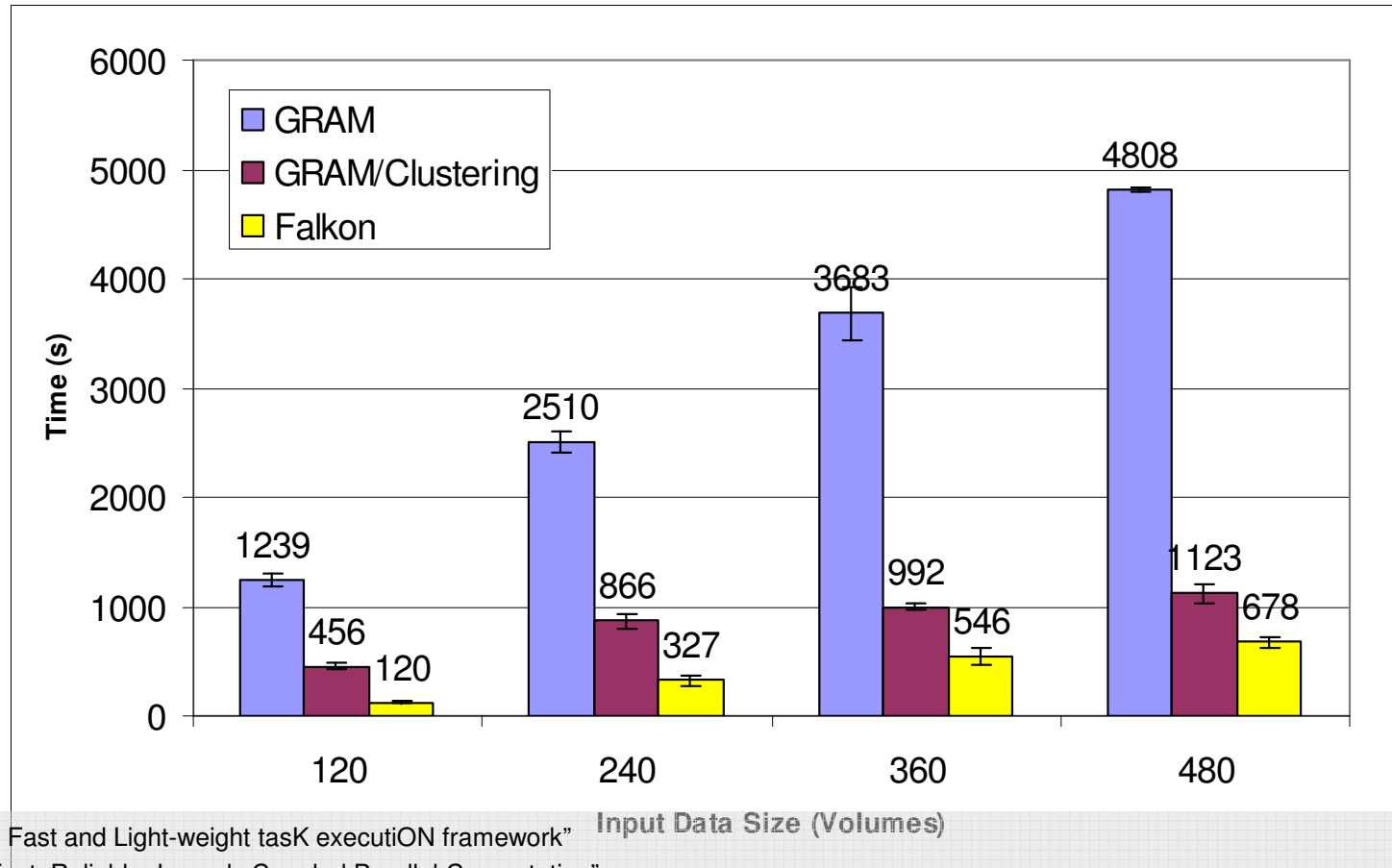
[SC07] "Falkon: a Fast and Light-weight task executiON framework"

[SWF07] "Swift: Fast, Reliable, Loosely Coupled Parallel Computation"

# Applications

## Medical Imaging: fMRI

- GRAM vs. Falcon: **85%~90%** lower run time
- GRAM/Clustering vs. Falcon: **40%~74%** lower run time



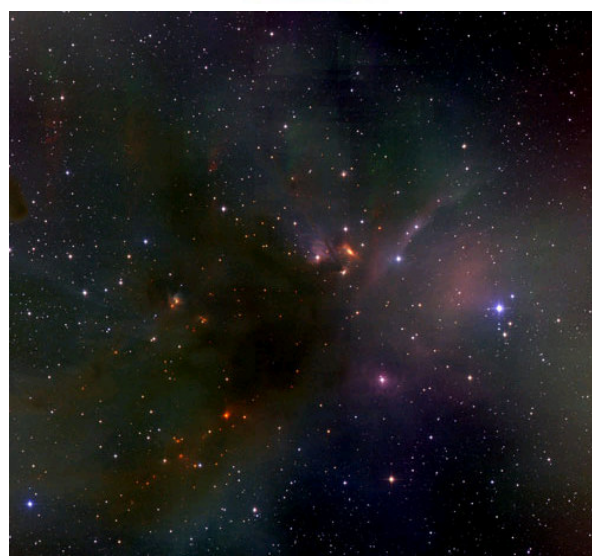
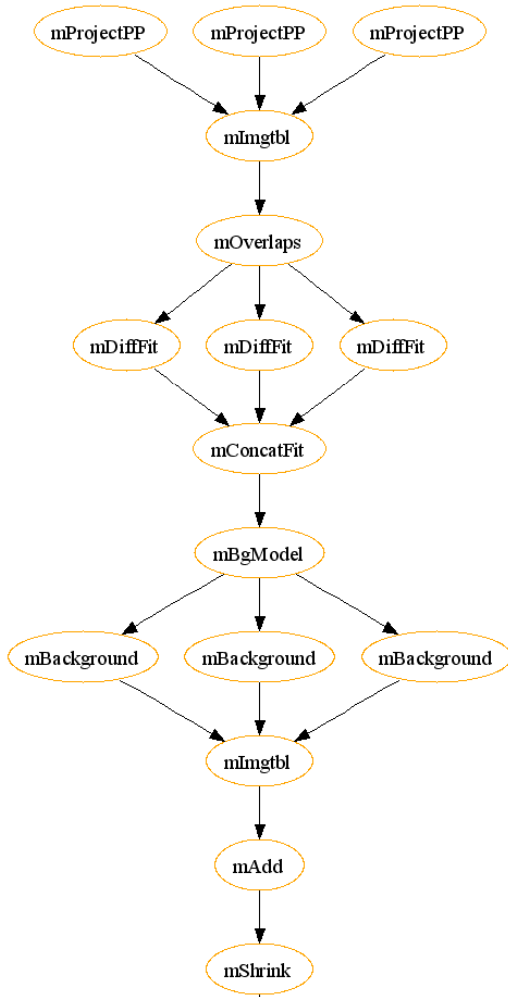
[SC07] "Falcon: a Fast and Light-weight task executiON framework"

[SWF07] "Swift: Fast, Reliable, Loosely Coupled Parallel Computation"



# Applications

## Astronomy: Montage



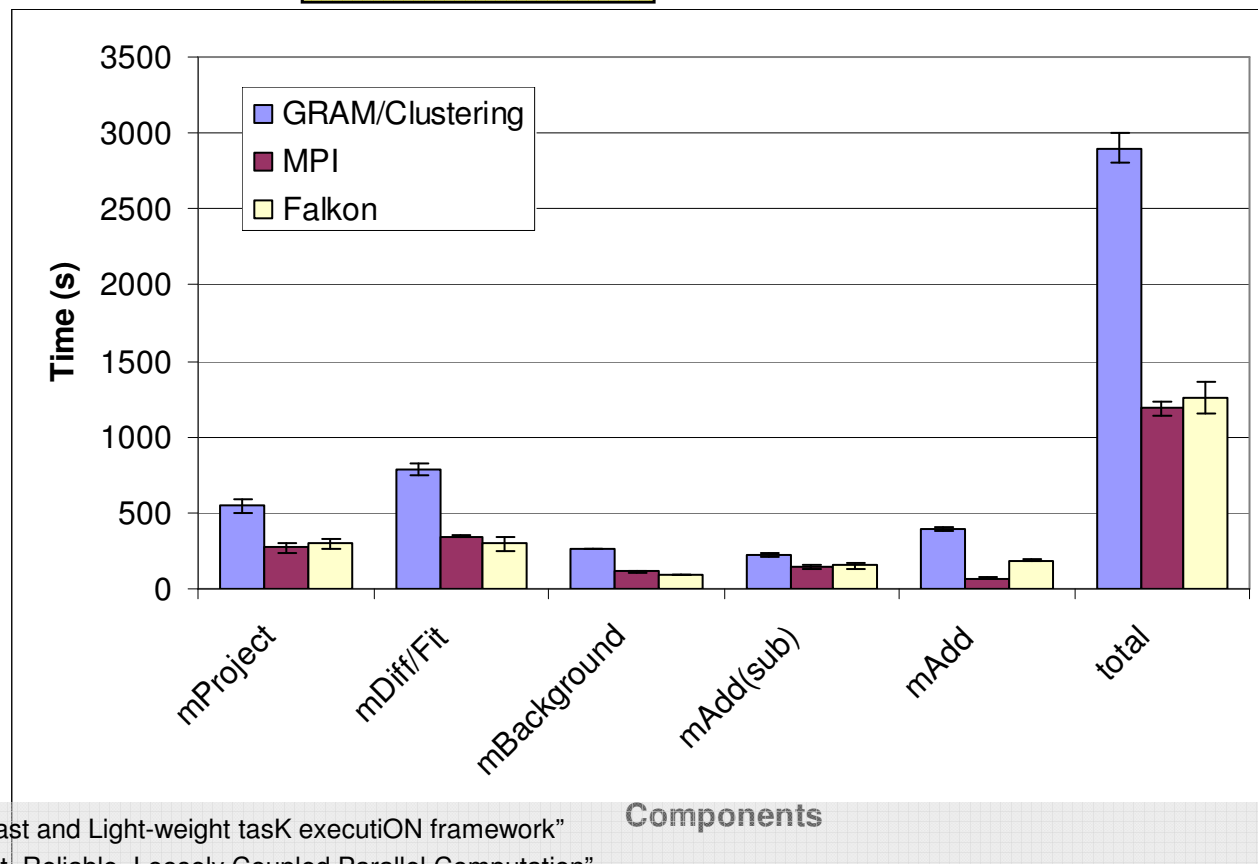
B. Berriman, J. Good (Caltech)  
 J. Jacob, D. Katz (JPL)

[SC07] "Falcon: a Fast and Light-weight task executiON framework"  
 [SWF07] "Swift: Fast, Reliable, Loosely Coupled Parallel Computation"

# Applications

## Astronomy: Montage

- GRAM/Clustering vs. Falcon: **57%** lower application run time
- MPI\* vs. Falcon: **4%** higher application run time
- \* MPI should be **lower bound**



[SC07] "Falcon: a Fast and Light-weight task executiON framework"

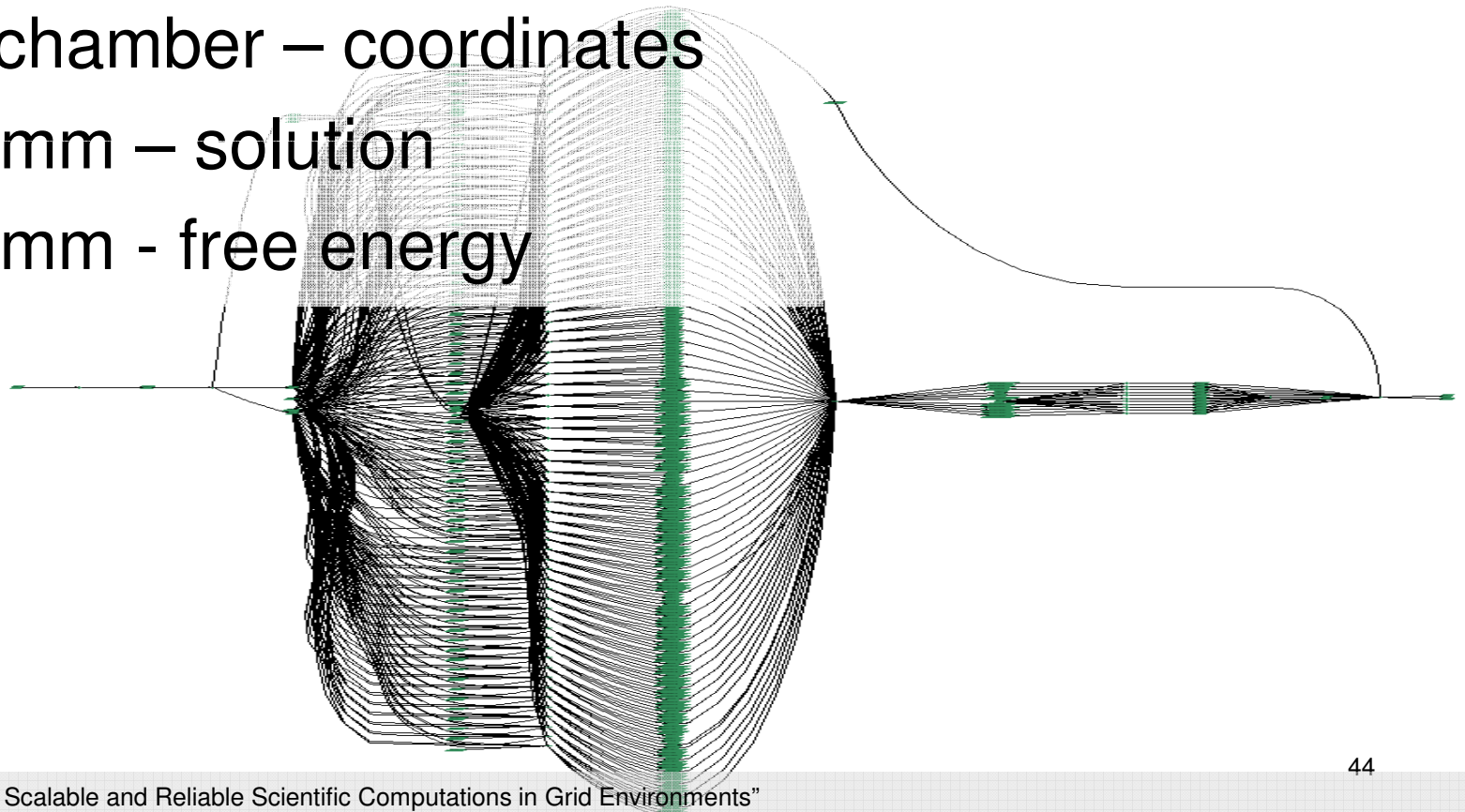
[SWF07] "Swift: Fast, Reliable, Loosely Coupled Parallel Computation"

Components

# Applications

## Molecular Dynamics: MolDyn

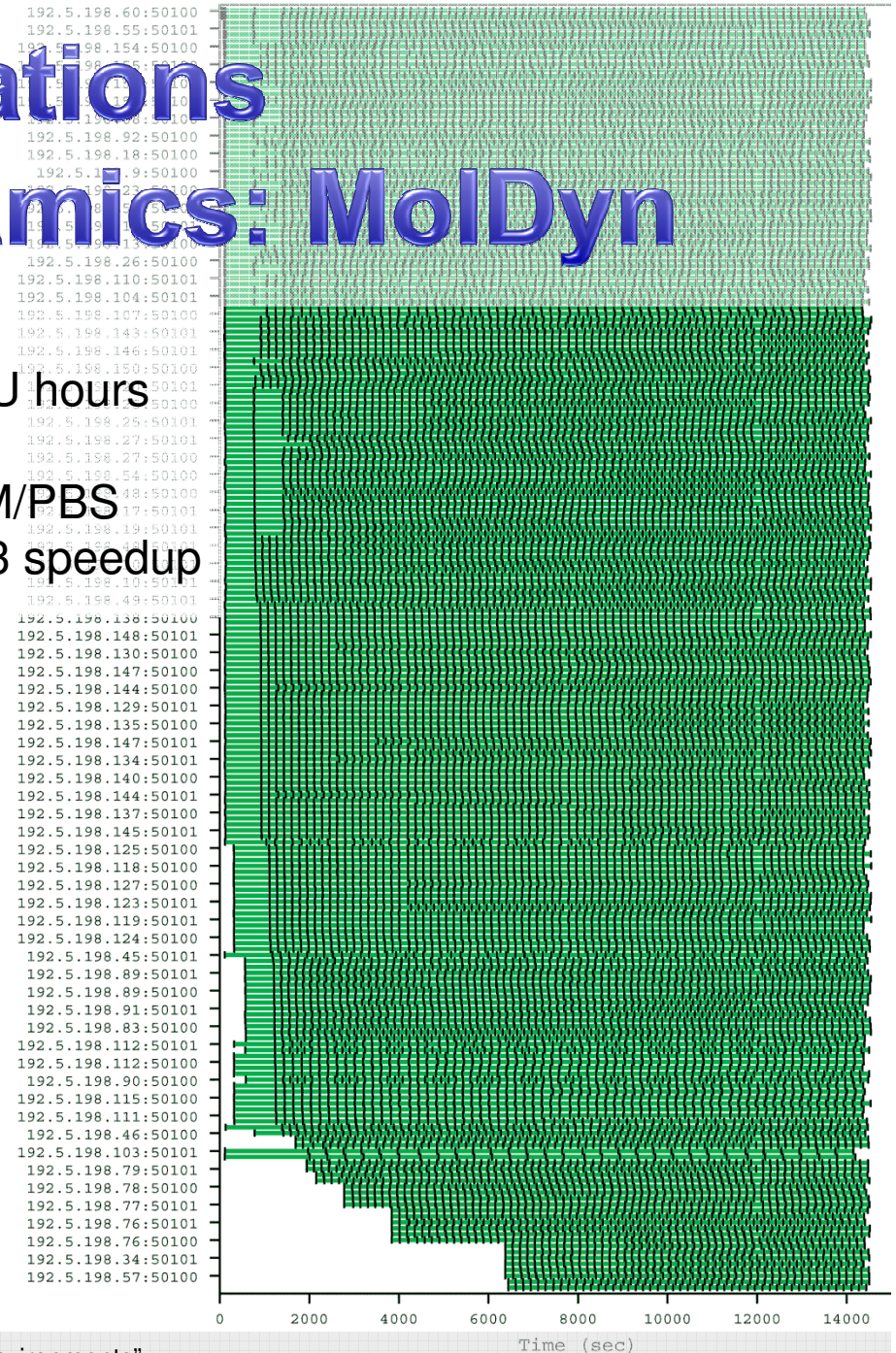
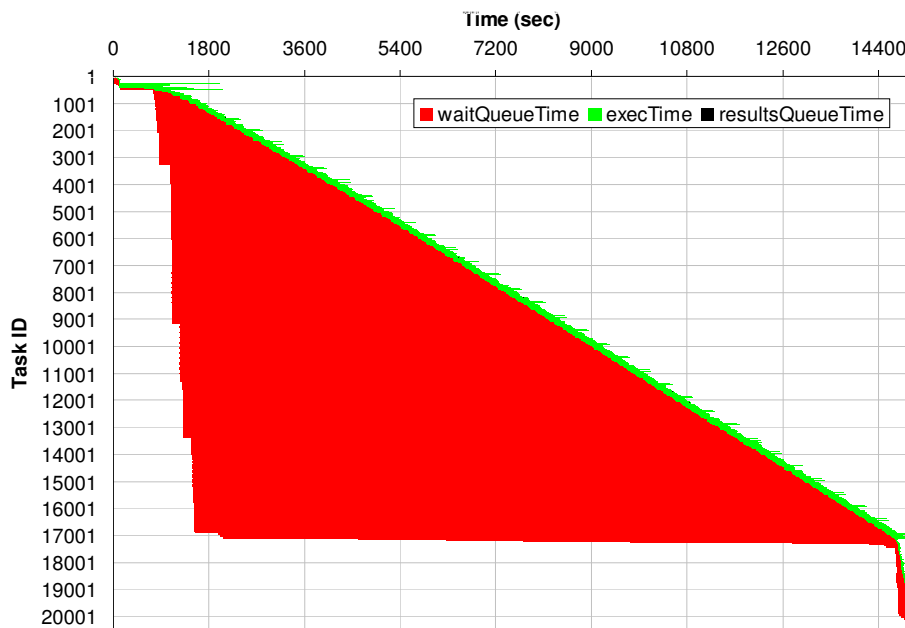
- Determination of free energies in aqueous solution
  - Antechamber – coordinates
  - Charmm – solution
  - Charmm - free energy



# Applications

## Molecular Dynamics: MolDyn

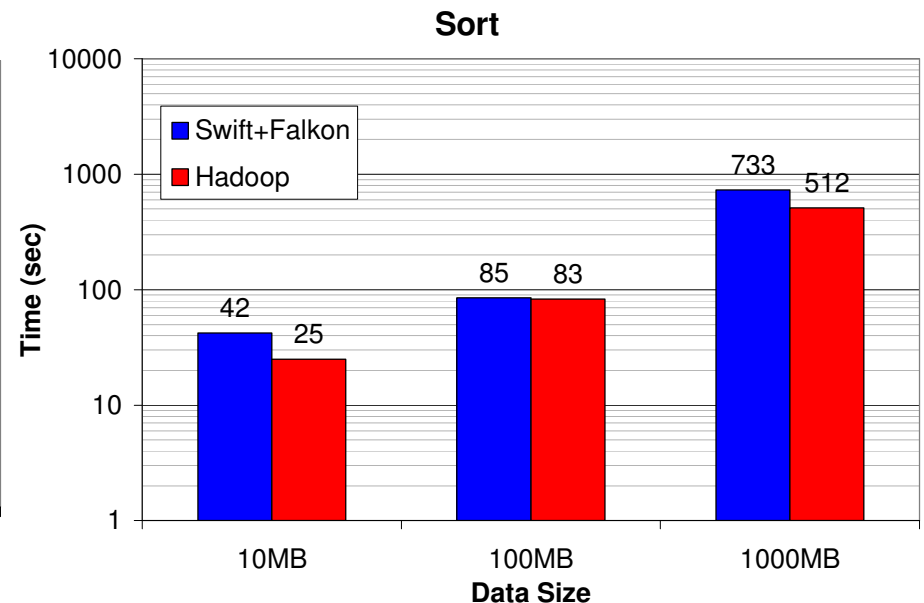
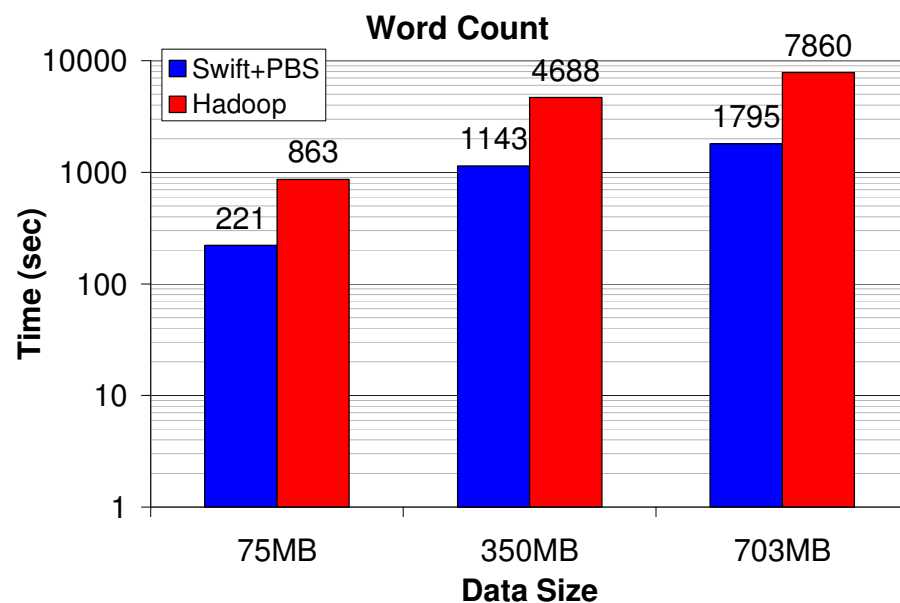
- 244 molecules → 20497 jobs
- 15091 seconds on 216 CPUs → 867.1 CPU hours
- Efficiency: **99.8%**
- Speedup: 206.9x → 8.2x faster than GRAM/PBS
- 50 molecules w/ GRAM (4201 jobs) → 25.3 speedup



# Applications

## Word Count and Sort

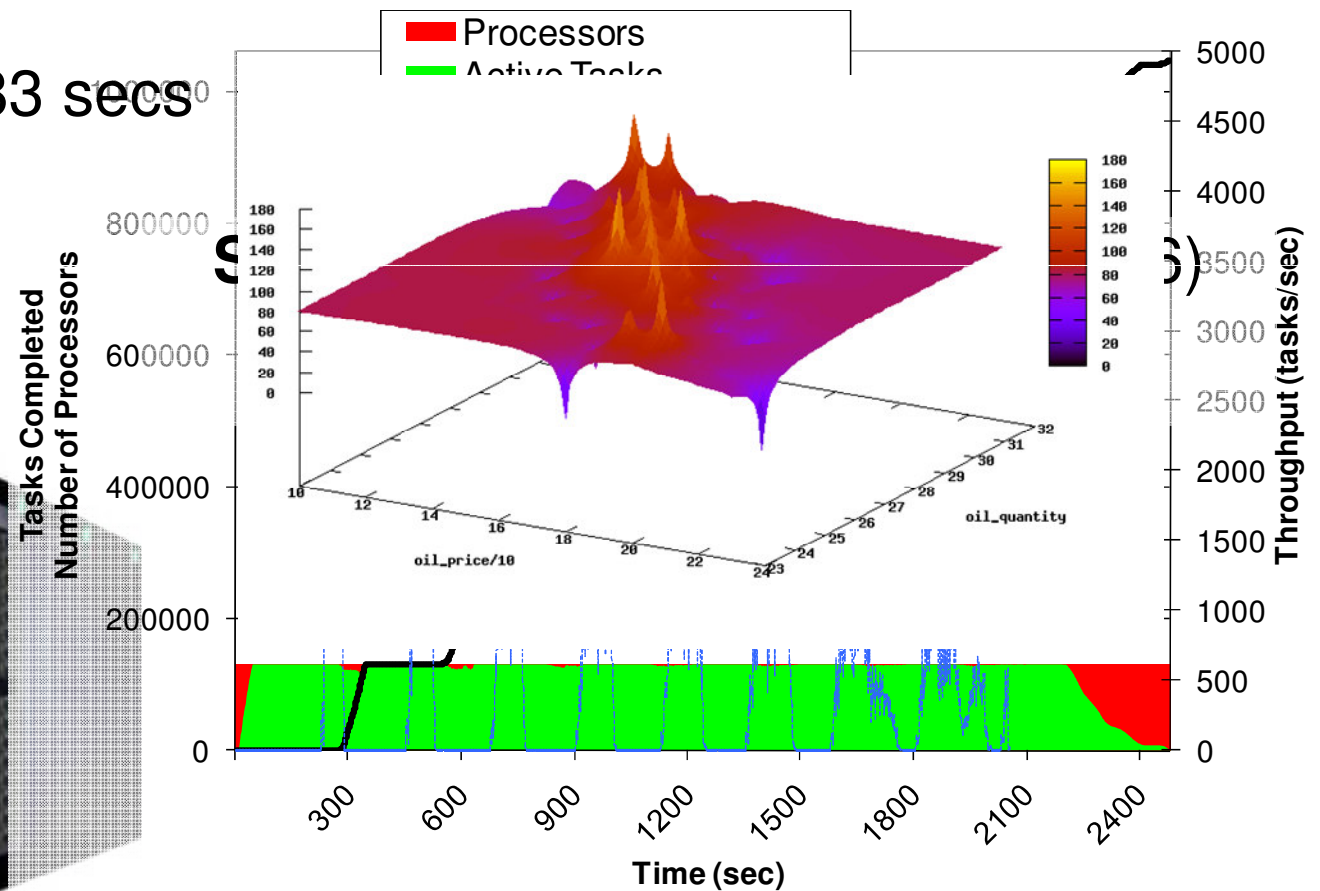
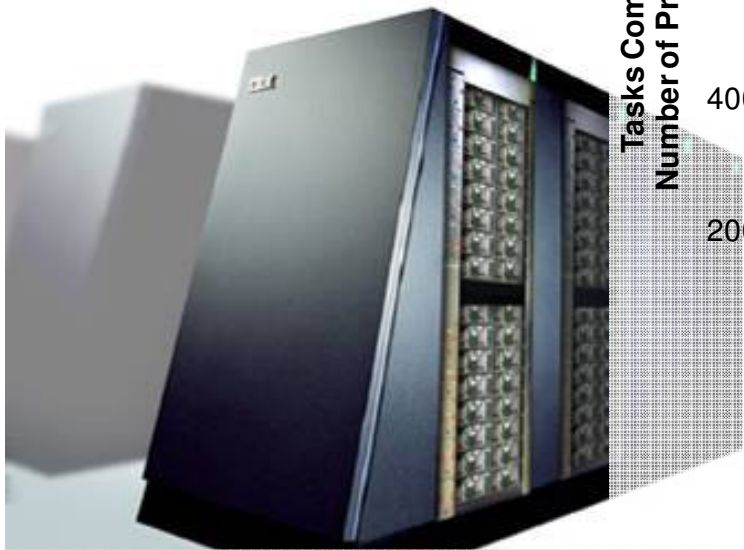
- Classic benchmarks for MapReduce
  - Word Count
  - Sort
- Swift and Falcon performs similar or better than Hadoop (on 32 processors)



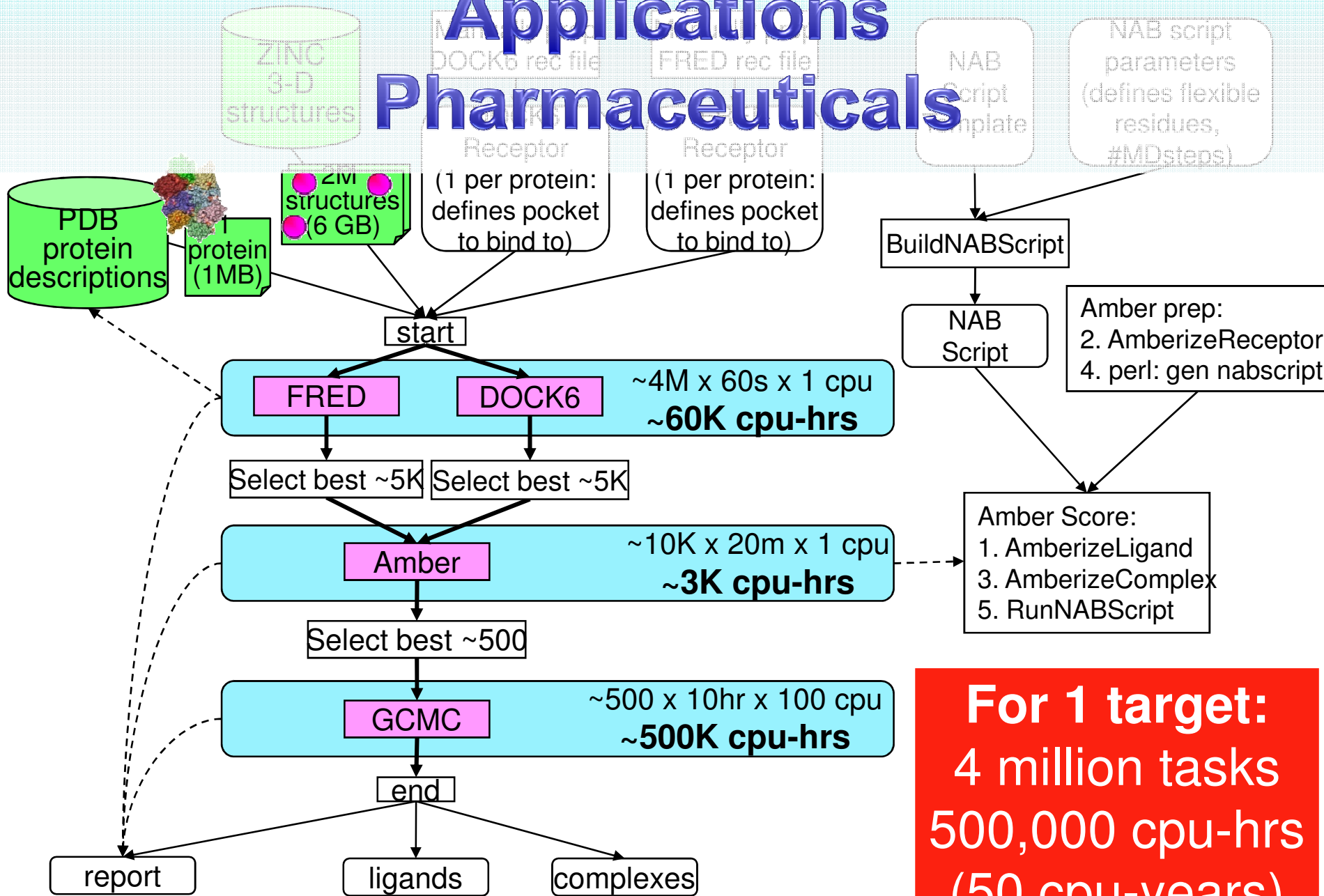
# Applications

## Economic Modeling: MARS

- CPU Cores: 130816
- Tasks: 1048576
- Elapsed time: 2483 secs
- CPU Years: 9.3



# Applications Pharmaceuticals



# Applications

## Pharmaceuticals: DOCK

CPU cores: 118784

Tasks: 934803

Elapsed time: 2.01 hours

Compute time: 21.43 CPU years

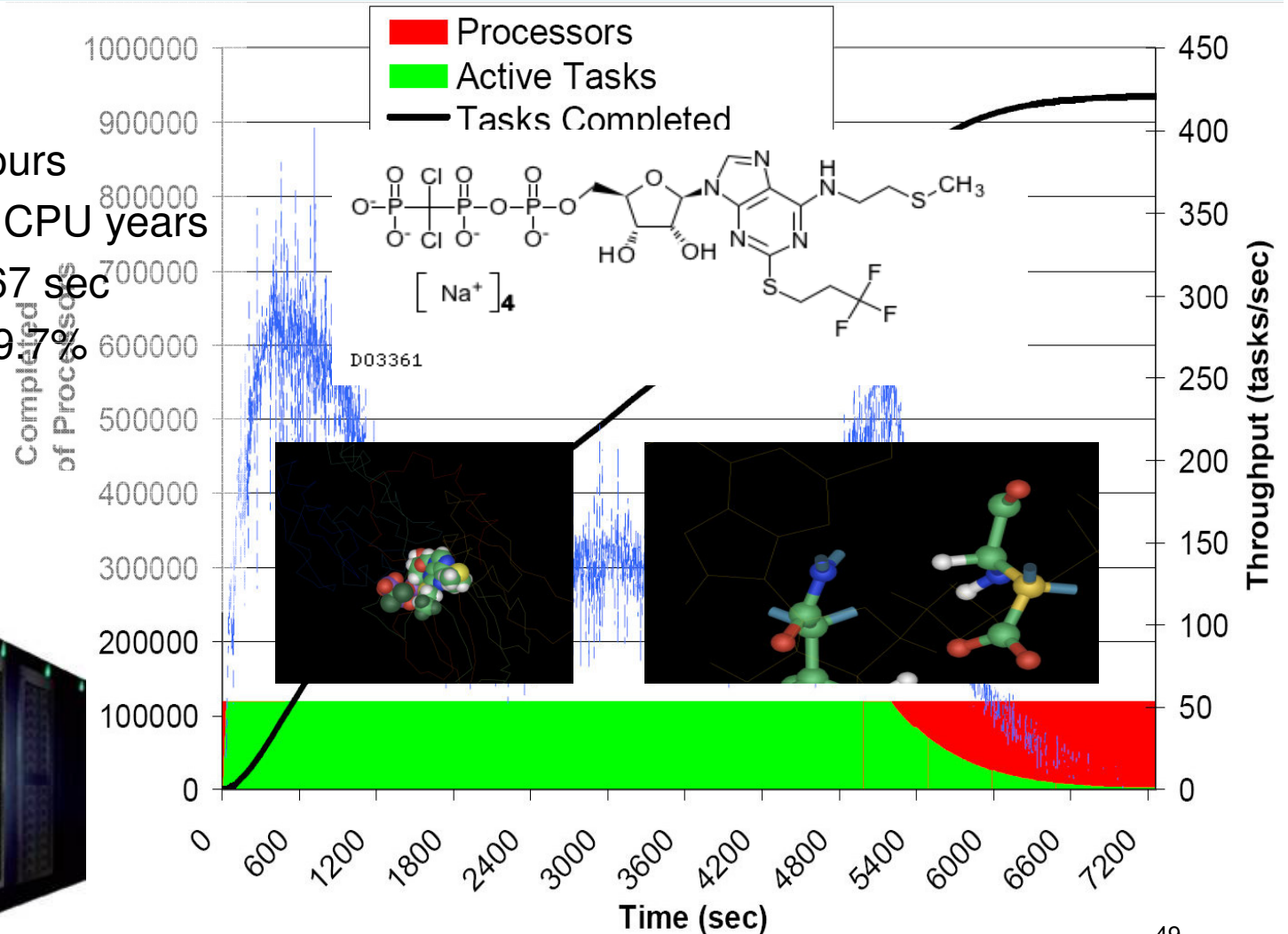
Average task time: 667 sec

Relative Efficiency: 99.7%

(from 16 to 32 racks)

Utilization:

- Sustained: 99.6%
- Overall: 78.3%

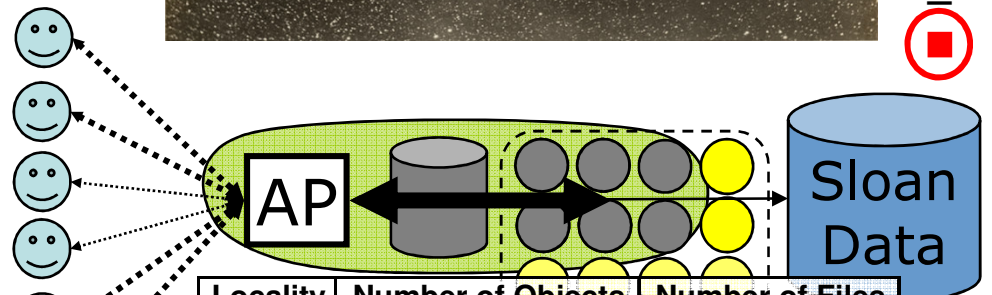
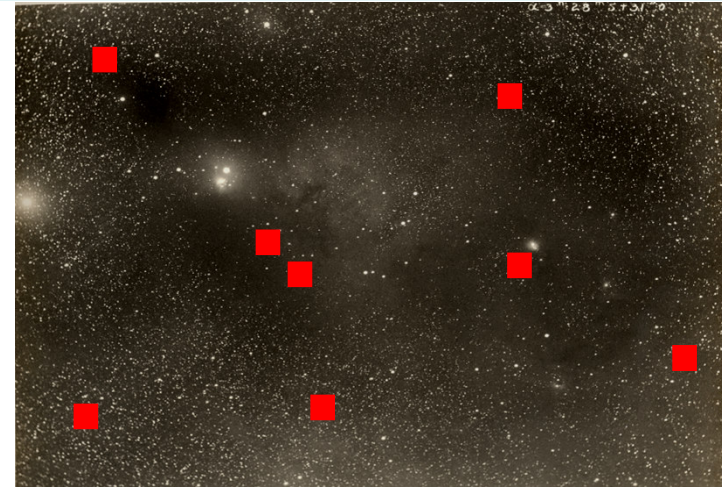




# Applications

## Astronomy: AstroPortal

- Purpose
  - On-demand “stacks” of random locations within ~10TB dataset
- Challenge
  - Processing Costs:
    - $O(100\text{ms})$  per object
  - Data Intensive:
    - 40MB:1sec
  - Rapid access to 10-10K “random” files
  - Time-varying load



Locality	Number of Objects	Number of Files
1	111700	111700
1.38	154345	111699
2	97999	49000
3	88857	29620
4	76575	19145
5	60590	12120
10	46480	4650
20	40460	2025
30	23695	790

[DADC08] “Accelerating Large-scale Data Exploration through Data Diffusion”

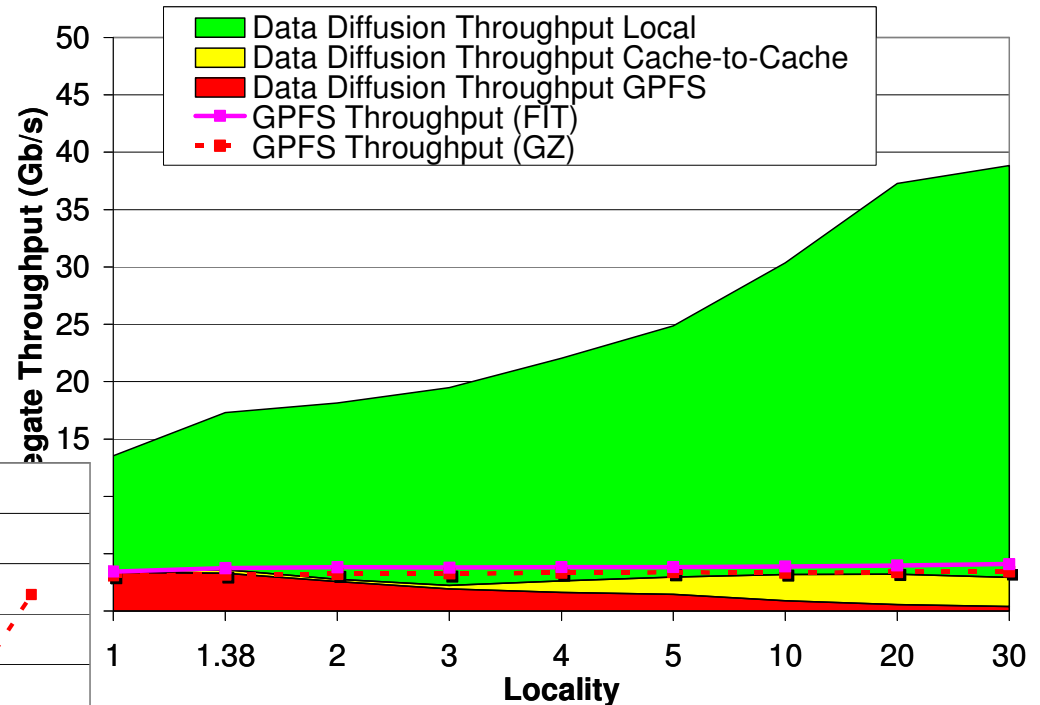
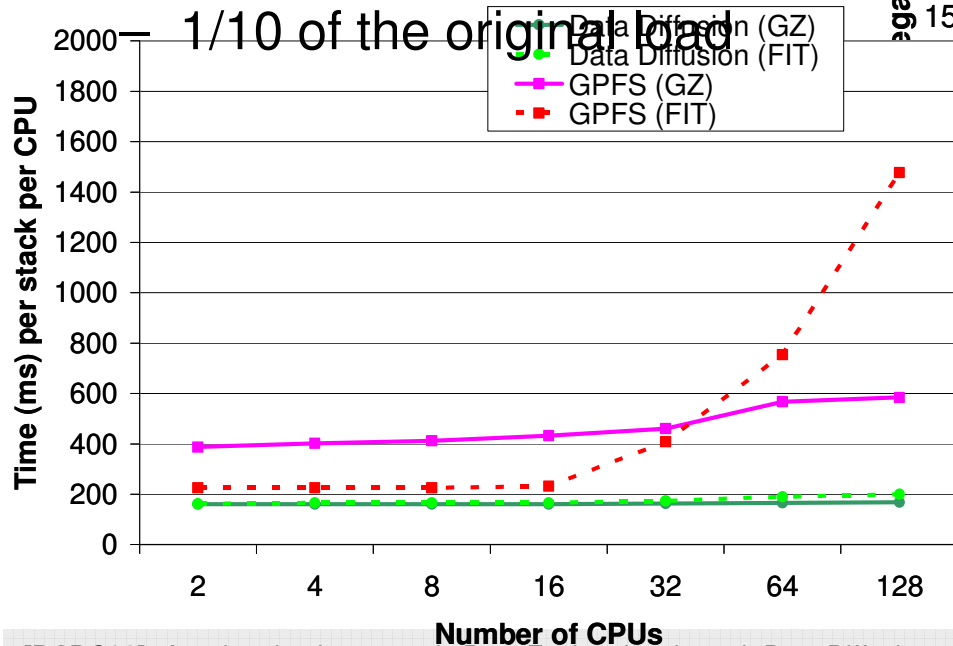
[TG06] “AstroPortal: A Science Gateway for Large-scale Astronomy Data Analysis”

# Applications

## Astronomy: AstroPortal

- Aggregate throughput:
  - 39Gb/s
  - 10X higher than GPFS
- Reduced load on GPFS
  - 0.49Gb/s

1/10 of the original load

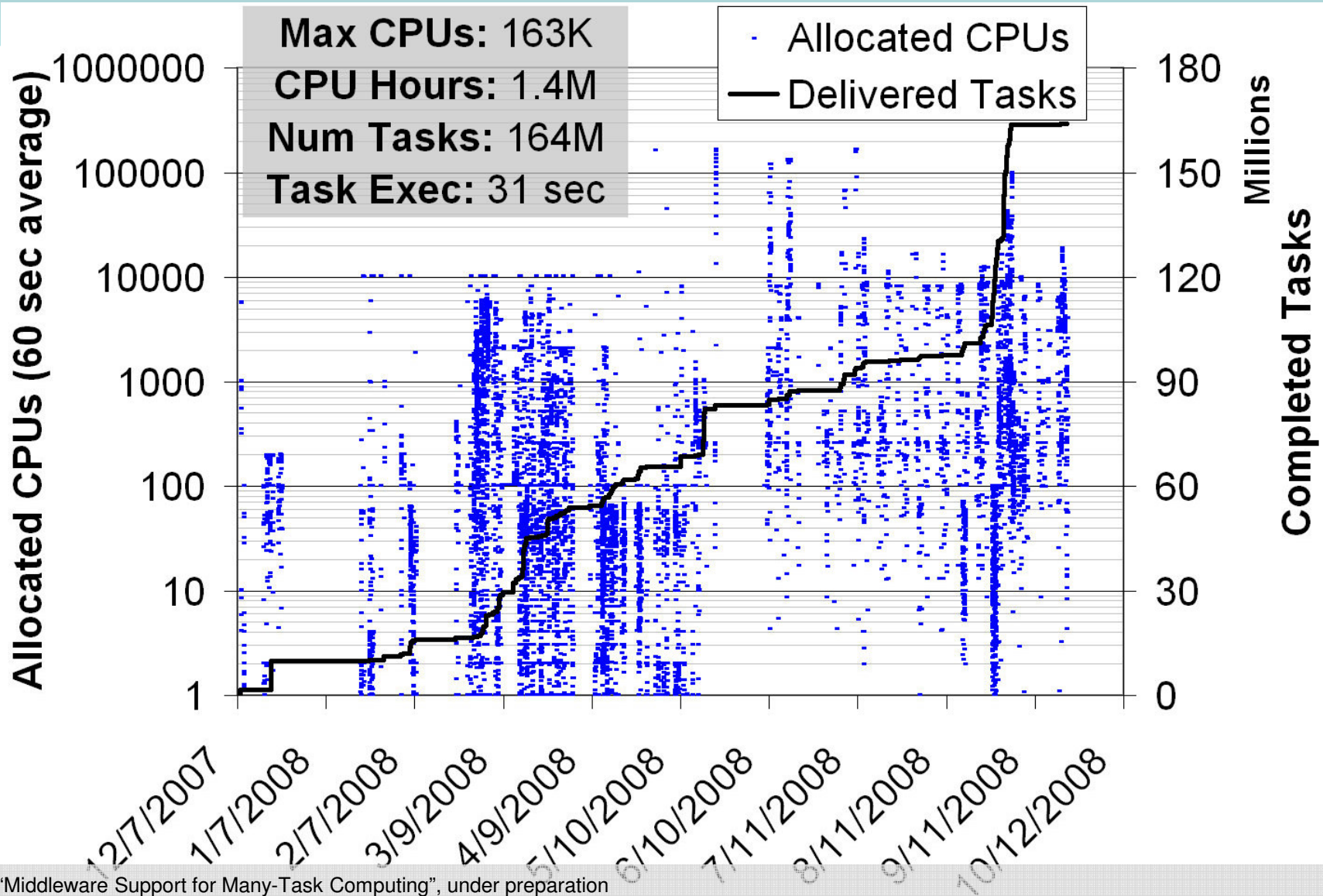


← High data locality  
– Near perfect scalability

# Falkon Project

- Falkon is a real system
  - Late 2005: Initial prototype, AstroPortal
  - January 2007: Falkon v0
  - November 2007: Globus incubator project v0.1
    - <http://dev.globus.org/wiki/Incubator/Falkon>
  - February 2009: Globus incubator project v0.9
- Implemented in Java (~20K lines) and C (~1K lines)
  - Based on the Globus Toolkit 4.0
  - Open source: svn co <https://svn.globus.org/repos/falkon>
- Source code contributors (beside myself)
  - Yong Zhao, Zhao Zhang, Ben Clifford, Mihael Hategan, Gabriela Turcu
- Ideas contributors
  - Ian Foster, Mike Wilde, Catalin Dumitrescu, Alex Szalay, Jim Gray, ...

# Falkon Activity History (10 months)

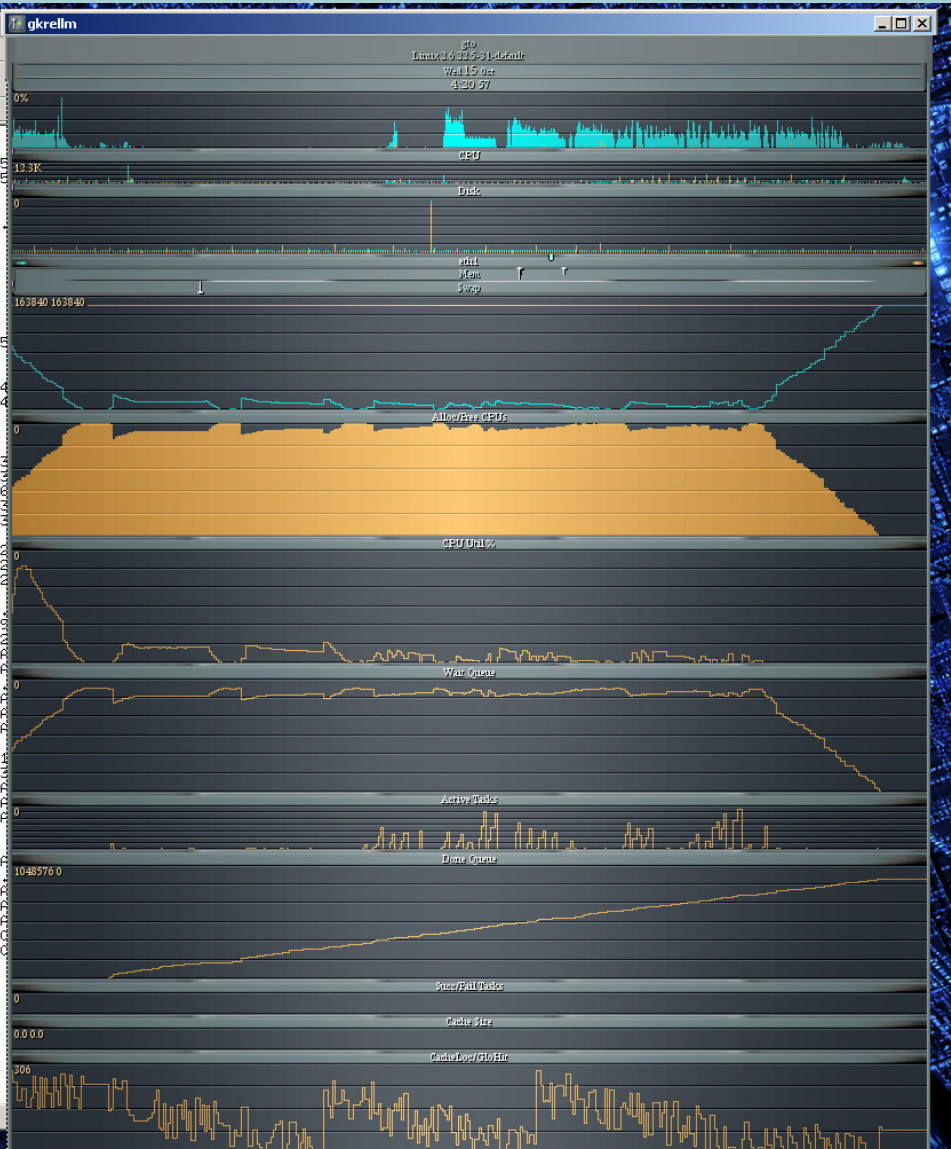


# Falkon Monitoring

```
gto.ci.uchicago.edu (1) - SecureCRT
File Edit View Options Transfer Script Tools Help

gto.ci.uchicago.edu | gto.ci.uchicago.edu (1) | gto.ci.uchicago.edu (3) | gto.ci.uchicago.edu (2) | gto.ci.uchicago.edu (5) | gto.ci.uchicago.edu (4)

397,951 tasks+ 908675 tasks- 0 tasks-> 1048576 completed 86.66 tasks_tp 3246.03 aver_tp 2695.68 stdev_tp 3157.365 ETA
398,959 tasks+ 911918 tasks- 0 tasks-> 1048576 completed 86.97 tasks_tp 3217.26 aver_tp 2697.24 stdev_tp 3152.763 ETA
399,967 tasks+ 913940 tasks- 0 tasks-> 1048576 completed 87.16 tasks_tp 3205.95 aver_tp 2695.18 stdev_tp 3148.28 ETA
400,976 tasks+ 916630 tasks- 0 tasks-> 1048576 completed 87.42 tasks_tp 3268.65 aver_tp 2695.1 stdev_tp 3143.592 ETA
401,984 tasks+ 919282 tasks- 0 tasks-> 1048576 completed 87.67 tasks_tp 2630.95 aver_tp 2694.91 stdev_tp 3138.926 ETA
402,992 tasks+ 921616 tasks- 0 tasks-> 1048576 completed 87.89 tasks_tp 2315.48 aver_tp 2693.79 stdev_tp 3134.347 ETA
404,0 tasks+ 924266 tasks- 0 tasks-> 1048576 completed 88.14 tasks_tp 2628.97 aver_tp 2693.6 stdev_tp 3129.723 ETA
405,004 tasks+ 926864 tasks- 0 tasks-> 1048576 completed 88.39 tasks_tp 2587.65 aver_tp 2693.29 stdev_tp 3125.122 ETA
406,008 tasks+ 929627 tasks- 0 tasks-> 1048576 completed 88.66 tasks_tp 2751.99 aver_tp 2693.46 stdev_tp 3120.538 ETA
407,013 tasks+ 932059 tasks- 0 tasks-> 1048576 completed 88.89 tasks_tp 2422.31 aver_tp 2692.66 stdev_tp 3116.007 ETA
408,017 tasks+ 934610 tasks- 0 tasks-> 1048576 completed 89.13 tasks_tp 2540.84 aver_tp 2692.22 stdev_tp 3111.472 ETA
409,021 tasks+ 937191 tasks- 0 tasks-> 1048576 completed 89.36 tasks_tp 2439.24 aver_tp 2691.49 stdev_tp 3106.976 ETA
410,025 tasks+ 939792 tasks- 0 tasks-> 1048576 completed 89.57 tasks_tp 2122.51 aver_tp 2689.84 stdev_tp 3102.621 ETA
411,029 tasks+ 942413 tasks- 0 tasks-> 1048576 completed 89.79 tasks_tp 2279.85 aver_tp 2688.65 stdev_tp 3099.212 ETA
412,033 tasks+ 945056 tasks- 0 tasks-> 1048576 completed 90.0 tasks_tp 2218.13 aver_tp 2687.3 stdev_tp 3095.848 ETA
413,038 tasks+ 947820 tasks- 0 tasks-> 1048576 completed 90.21 tasks_tp 2171.31 aver_tp 2685.81 stdev_tp 3089.523 ETA
414,042 tasks+ 949603 tasks- 0 tasks-> 1048576 completed 90.42 tasks_tp 2234.06 aver_tp 2684.52 stdev_tp 3085.168 ETA
415,046 tasks+ 951406 tasks- 0 tasks-> 1048576 completed 90.62 tasks_tp 2047.81 aver_tp 2682.7 stdev_tp 3080.965 ETA
416,05 tasks+ 953229 tasks- 0 tasks-> 1048576 completed 90.81 tasks_tp 2164.42 aver_tp 2681.17 stdev_tp 3076.707 ETA
417,054 tasks+ 954661 tasks- 0 tasks-> 1048576 completed 91.01 tasks_tp 2214.34 aver_tp 2679.84 stdev_tp 3072.434 ETA
418,062 tasks+ 956645 tasks- 0 tasks-> 1048576 completed 91.23 tasks_tp 2067.46 aver_tp 2678.11 stdev_tp 3068.251 ETA
419,071 tasks+ 958742 tasks- 0 tasks-> 1048576 completed 91.43 tasks_tp 2680.36 aver_tp 2676.42 stdev_tp 3064.079 ETA
420,079 tasks+ 960880 tasks- 0 tasks-> 1048576 completed 91.6 tasks_tp 1724.21 aver_tp 2673.73 stdev_tp 3060.176 ETA
421,087 tasks+ 962665 tasks- 0 tasks-> 1048576 completed 91.8 tasks_tp 2108.13 aver_tp 2672.15 stdev_tp 3056.022 ETA
422,095 tasks+ 964697 tasks- 0 tasks-> 1048576 completed 92.0 tasks_tp 2075.4 aver_tp 2670.47 stdev_tp 3051.902 ETA
423,103 tasks+ 966960 tasks- 0 tasks-> 1048576 completed 92.12 tasks_tp 1248.62 aver_tp 2666.5 stdev_tp 3048.561 ETA
424,111 tasks+ 974461 tasks- 0 tasks-> 1048576 completed 92.93 tasks_tp 8425.6 aver_tp 2682.54 stdev_tp 3059.406 ETA
425,119 tasks+ 978213 tasks- 0 tasks-> 1048576 completed 93.29 tasks_tp 3722.22 aver_tp 2695.43 stdev_tp 3095.644 ETA
426,128 tasks+ 980643 tasks- 0 tasks-> 1048576 completed 93.48 tasks_tp 3011.8 aver_tp 2683.57 stdev_tp 3051.614 ETA
427,136 tasks+ 982449 tasks- 0 tasks-> 1048576 completed 93.65 tasks_tp 1887.5 aver_tp 2682.19 stdev_tp 3047.508 ETA
428,144 tasks+ 984246 tasks- 0 tasks-> 1048576 completed 93.81 tasks_tp 2044.76 aver_tp 2677.45 stdev_tp 3044.643 ETA
429,152 tasks+ 987618 tasks- 0 tasks-> 1048576 completed 94.38 tasks_tp 144.26 aver_tp 2691.51 stdev_tp 3041.441 ETA
430,16 tasks+ 995260 tasks- 0 tasks-> 1048576 completed 94.58 tasks_tp 204.26 aver_tp 2694.97 stdev_tp 3048.1 ETA
431,168 tasks+ 995260 tasks- 0 tasks-> 1048576 completed 94.92 tasks_tp 0.0 aver_tp 2687.5 stdev_tp 3047.182 ETA
432,176 tasks+ 997217 tasks- 0 tasks-> 1048576 completed 95.1 tasks_tp 1941.47 aver_tp 2685.57 stdev_tp 3043.276 ETA
433,184 tasks+ 999248 tasks- 0 tasks-> 1048576 completed 95.57 tasks_tp 197.97 aver_tp 2691.53 stdev_tp 3041.282 ETA
434,193 tasks+ 1000294 tasks- 0 tasks-> 1048576 completed 95.99 tasks_tp 109.09 aver_tp 2681.77 stdev_tp 3040.335 ETA
435,201 tasks+ 1007778 tasks- 0 tasks-> 1048576 completed 96.37 tasks_tp 109.33 stdev_tp 3039.485 ETA
436,209 tasks+ 1010258 tasks- 0 tasks-> 1048576 completed 96.73 tasks_tp 109.43 stdev_tp 3038.422 ETA
437,217 tasks+ 1011812 tasks- 0 tasks-> 1048576 completed 96.49 tasks_tp 1527.58 aver_tp 2688.38 stdev_tp 3033.597 ETA
438,225 tasks+ 1015396 tasks- 0 tasks-> 1048576 completed 96.84 tasks_tp 3595.56 aver_tp 2690.71 stdev_tp 3027.863 ETA
439,233 tasks+ 1019985 tasks- 0 tasks-> 1048576 completed 97.27 tasks_tp 6550.5 aver_tp 2695.5 stdev_tp 3025.337 ETA
440,241 tasks+ 1024680 tasks- 0 tasks-> 1048576 completed 97.77 tasks_tp 4042.47 aver_tp 2698.82 stdev_tp 3022.899 ETA
441,249 tasks+ 1029381 tasks- 0 tasks-> 1048576 completed 98.33 tasks_tp 1018.77 ETA
442,257 tasks+ 1034088 tasks- 0 tasks-> 1048576 completed 98.23 tasks_tp 4472.22 aver_tp 2694.32 stdev_tp 3016.048 ETA
443,265 tasks+ 1038796 tasks- 0 tasks-> 1048576 completed 98.47 tasks_tp 2319.44 aver_tp 2693.04 stdev_tp 3012.127 ETA
444,274 tasks+ 1043595 tasks- 0 tasks-> 1048576 completed 98.83 tasks_tp 3652.7 aver_tp 2695.59 stdev_tp 3009.572 ETA
445,282 tasks+ 1048393 tasks- 0 tasks-> 1048576 completed 99.07 tasks_tp 2864.46 aver_tp 2695.24 stdev_tp 3004.628 ETA
446,29 tasks+ 1053192 tasks- 0 tasks-> 1048576 completed 99.3 tasks_tp 1929.56 aver_tp 2692.24 stdev_tp 3000.949 ETA
447,298 tasks+ 1057991 tasks- 0 tasks-> 1048576 completed 99.33 tasks_tp 395.83 aver_tp 2687.24 stdev_tp 2999.32 ETA
448,306 tasks+ 1062790 tasks- 0 tasks-> 1048576 completed 99.51 tasks_tp 2265.57 aver_tp 2686.15 stdev_tp 2995.489 ETA
449,314 tasks+ 1067589 tasks- 0 tasks-> 1048576 completed 99.77 tasks_tp 2630.18 aver_tp 2686.15 stdev_tp 2991.596 ETA
450,322 tasks+ 1072388 tasks- 0 tasks-> 1048576 completed 100.0 tasks_tp 2354.17 aver_tp 2685.29 stdev_tp 2987.766 ETA
451,331 tasks+ 1048576 tasks- 0 tasks-> 1048576 completed 100.0 tasks_tp 0.0 aver_tp 2678.35 stdev_tp 2987.016 ETA
452,339 tasks+ 1048576 tasks- 0 tasks-> 1048576 completed 100.0 tasks_tp 0.0 aver_tp 2671.45 stdev_tp 2986.253 ETA
453,347 tasks+ 1048576 tasks- 0 tasks-> 1048576 completed 100.0 tasks_tp 0.0 aver_tp 2671.45 stdev_tp 2986.253 ETA
1048576 tasks completed in 453.505 sec
Successful tasks: 1048576
Failed tasks: 0
Notification Errors: 0
Overall Throughput (tasks/sec): 2312.16
Overall Throughput Standard Deviation: 2986.253
waiting to destroy all resources...
ShutdownHook triggered successfully!
iraicu@gto:~/falkon>
```



# Related Work:

## Local Resource Management

- [Litzkow88]: Condor
- [Bode00]: Portable Batch System (PBS)
- [Zhou92]: Load Sharing Facility (LSF)
- [Gentzsch01]: Sun Grid Engine (SGE)
- [Anderson04]: BOINC volunteer computing
- [Desai05]: Cobalt

### Conclusion:

- *Most supported HPC and/or HTC, but due to relatively heavy-weight implementations they are not suitable for MTC*
- *None addressed data intensive workloads with data-aware schedulers*

# Related Work: Resource Provisioning

- [Banga99,Stankovic99]: Multi-Level Scheduling
- [Appleby01]: Oceano - SLA Based Management of a Computing Utility
- [Frey02,Mehta06]: Condor glide-ins
- [Walker06]: MyCluster (based on Condor glide-ins)
- [Ramakrishnan06]: Grid Hosting with Adaptive Resource Control
- [Bresnahan06]: Provisioning of bandwidth
- [Singh06]: Simulations

**Conclusion:** *None allowed for dynamic resizing of resource pool (independent of application logic) based on system load*

# Related Work: Data Management

- **[Ghemawat03,Dean04]**: MapReduce+GFS
  - **[Bialecki05]**: Hadoop+HDFS
  - **[Gu06]**: Sphere+Sector
  - **[Tatebe04]**: Gfarm
  - **[Chervenak04]**: RLS, DRS
  - **[Kosar06]**: Stork
- 
- **Conclusions**
    - *None focused on the co-location of storage and generic black box computations with data-aware scheduling while operating in a dynamic elastic environment*
    - *Swift + Falkon + Data Diffusion is arguably a more generic and powerful solution than MapReduce*



# Contributions

- There is more to HPC than tightly coupled MPI, and more to HTC than embarrassingly parallel long jobs
  - MTC: Many-Task Computing
  - Addressed real challenges in resource management in large scale distributed systems to enable MTC
  - Covered many domains (via Swift and Falkon): astronomy, medicine, chemistry, molecular dynamics, economic modelling, and data analytics

# Contributions

- Identified that data locality is crucial to the efficient use of large scale distributed systems for data-intensive applications → Data Diffusion
  - Integrated streamlined task dispatching with data aware scheduling policies
  - Heuristics to maximize real world performance
  - Suitable for varying, data-intensive workloads
  - Proof of  $O(NM)$  Competitive Caching

# Mythbusting

- ~~Embarrassingly~~ Happily parallel apps are trivial to run
  - Logistical problems can be tremendous
- Loosely coupled apps do not require “supercomputers”
  - Total computational requirements can be enormous
  - **“Impossible only means that you haven't found the solution yet.”**
  - *Anonymous*
  - Costs to run “supercomputers” per FLOP is among the best
- Loosely coupled apps do not require specialized system software
  - Their requirements on the job submission and storage systems can be extremely large
- Shared/parallel file systems are good for all applications
  - They don't scale proportionally with the compute resources
  - Data intensive applications don't perform and scale well
  - Growing compute/storage gap

# More Information

- More information: <http://people.cs.uchicago.edu/~iraicu/>
- Related Projects:
  - Falkon: <http://dev.globus.org/wiki/Incubator/Falkon>
  - Swift: <http://www.ci.uchicago.edu/swift/index.php>
- Dissertation Committee:
  - Ian Foster, The University of Chicago & Argonne National Laboratory
  - Rick Stevens, The University of Chicago & Argonne National Laboratory
  - Alex Szalay, The Johns Hopkins University
- People contributing ideas, slides, source code, applications, results, etc
  - Ian Foster, Alex Szalay, Rick Stevens, Mike Wilde, Jim Gray, Catalin Dumitrescu, Yong Zhao, Zhao Zhang, Gabriela Turcu, Ben Clifford, Mihael Hategan, Allan Espinosa, Kamil Iskra, Pete Beckman, Philip Little, Christopher Moretti, Amitabh Chaudhary, Douglas Thain, Quan Pham, Atilla Balkir, Jing Tie, Veronika Nefedova, Sarah Kenny, Gregor von Laszewski, Tiberiu Stef-Praun, Julian Bunn, Andrew Binkowski, Glen Hocky, Donald Hanson, Matthew Cohoon, Fangfang Xia, Mike Kubal, ...
- Funding:
  - **NASA**: Ames Research Center, Graduate Student Research Program
    - Jerry C. Yan, NASA GSRP Research Advisor
  - **DOE**: Mathematical, Information, and Computational Sciences Division subprogram of the Office of Advanced Scientific Computing Research, Office of Science, U.S. Dept. of Energy
  - **NSF**: TeraGrid

# Publications Central to Dissertation

## (2006 – 2009)

1. Ioan Raicu, Ian Foster, Yong Zhao, Alex Szalay, Philip Little, Christopher M. Moretti, Amitabh Chaudhary, Douglas Thain. "Towards Data Intensive Many-Task Computing", under review as a book chapter in "Data Intensive Distributed Computing: Challenges and Solutions for Large-Scale Information Management", IGI Global Publishers
2. Ioan Raicu, Ian Foster, Yong Zhao, Philip Little, Christopher Moretti, Amitabh Chaudhary, Douglas Thain. "The Quest for Scalable Support of Data Intensive Workloads in Distributed Systems", under review at ACM HPDC09
3. Ioan Raicu, Ian Foster, Yong Zhao. "[Many-Task Computing for Grids and Supercomputers](#)", Invited Paper, IEEE Workshop on Many-Task Computing on Grids and Supercomputers (MTAGS08), 2008
4. Ian Foster, Yong Zhao, Ioan Raicu, Shiyong Lu. "[Cloud Computing and Grid Computing 360-Degree Compared](#)", IEEE Grid Computing Environments (GCE08) 2008.
5. Zhao Zhang, Allan Espinosa, Kamil Iskra, Ioan Raicu, Ian Foster, Michael Wilde. "[Design and Evaluation of a Collective I/O Model for Loosely-coupled Petascale Programming](#)", IEEE Workshop on Many-Task Computing on Grids and Supercomputers (MTAGS08) 2008.
6. Ioan Raicu, Zhao Zhang, Mike Wilde, Ian Foster, Pete Beckman, Kamil Iskra, Ben Clifford. "[Towards Loosely-Coupled Programming on Petascale Systems](#)", IEEE/ACM Supercomputing 2008.
7. Ioan Raicu, Ian Foster. "[Harnessing Grid Resources to Enable the Dynamic Analysis of Large Astronomy Datasets: Year 2 Status and Year 3 Proposal](#)", GSRP, Ames Research Center, NASA, March 2008 -- Award funded 10/1/08 - 9/30/09.
8. Quan T. Pham, Atilla S. Balkir, Jing Tie, Ian Foster, Mike Wilde, Ioan Raicu. "[Data Intensive Scalable Computing on TeraGrid: A Comparison of MapReduce and Swift](#)", Poster Presentation, TeraGrid Conference 2008.
9. Ioan Raicu, Yong Zhao, Ian Foster, Mike Wilde, Zhao Zhang, Ben Clifford, Mihael Hategan, Sarah Kenny. "[Managing and Executing Loosely Coupled Large Scale Applications on Clusters, Grids, and Supercomputers](#)", Extended Abstract, GlobusWorld08, part of Open Source Grid and Cluster Conference 2008.
10. Yong Zhao, Ioan Raicu, Ian Foster. "[Scientific Workflow Systems for 21st Century e-Science. New Bottle or New Wine?](#)", Invited Paper, IEEE Workshop on Scientific Workflows 2008.
11. Ioan Raicu, Yong Zhao, Ian Foster, Alex Szalay. "[Accelerating Large-scale Data Exploration through Data Diffusion](#)", Int. Workshop on Data-Aware Distributed Computing 2008.
12. Ioan Raicu, Ian Foster. "[Harnessing Grid Resources to Enable the Dynamic Analysis of Large Astronomy Datasets: Year 2 Status and Year 3 Proposal](#)", GSRP, Ames Research Center, NASA, February 2008.
13. Ioan Raicu, Ian Foster. "[Harnessing Grid Resources to Enable the Dynamic Analysis of Large Astronomy Datasets: Year 1 Final Report](#)", GSRP, Ames Research Center, NASA, February 2008.
14. Yong Zhao, Ioan Raicu, Ian Foster, Mihael Hategan, Veronika Nefedova, Mike Wilde. "[Realizing Fast, Scalable and Reliable Scientific Computations in Grid Environments](#)", Book chapter in Grid Computing Research Progress, ISBN: 978-1-60456-404-4, Nova Publisher 2008.
15. Ioan Raicu. "[Harnessing Grid Resources with Data-Centric Task Farms](#)", University of Chicago, Computer Science Department, PhD Proposal, December 2007, Chicago, Illinois.
16. Ioan Raicu, Yong Zhao, Catalin Dumitrescu, Ian Foster and Mike Wilde. "[Falkon: A Proposal for Project Globus Incubation](#)", Globus Incubation Management Project, 2007 – Proposal accepted 11/10/07.
17. Ioan Raicu, Ian Foster. "[Harnessing Grid Resources to Enable the Dynamic Analysis of Large Astronomy Datasets: Year 1 Status and Year 2 Proposal](#)", GSRP, Ames Research Center, NASA, February 2007 -- Award funded 10/1/07 - 9/30/08.
18. Ioan Raicu, Yong Zhao, Ian Foster, Alex Szalay. "[A Data Diffusion Approach to Large Scale Scientific Exploration](#)", Microsoft Research eScience Workshop 2007.
19. Ioan Raicu, Yong Zhao, Catalin Dumitrescu, Ian Foster, Mike Wilde. "[Falkon: a Fast and Light-weight task executiON framework](#)", IEEE/ACM SuperComputing 2007.
20. Ioan Raicu, Catalin Dumitrescu, Ian Foster. "[Dynamic Resource Provisioning in Grid Environments](#)", TeraGrid Conference 2007.
21. Yong Zhao, Mihael Hategan, Ben Clifford, Ian Foster, Gregor von Laszewski, Ioan Raicu, Tiberiu Stef-Praun, Mike Wilde. "[Swift: Fast, Reliable, Loosely Coupled Parallel Computation](#)", IEEE Workshop on Scientific Workflows 2007.
22. Ioan Raicu, Ian Foster. "[Harnessing Grid Resources to Enable the Dynamic Analysis of Large Astronomy Datasets](#)", GSRP, Ames Research Center, NASA, February 2006 -- Award funded 10/1/06 - 9/30/07.
23. Ioan Raicu, Ian Foster, Alex Szalay. "[Harnessing Grid Resources to Enable the Dynamic Analysis of Large Astronomy Datasets](#)", poster, IEEE/ACM SuperComputing 2006.
24. Ioan Raicu, Ian Foster, Alex Szalay, Gabriela Turcu. "[AstroPortal: A Science Gateway for Large-scale Astronomy Data Analysis](#)", TeraGrid Conference 2006, June 2006.
25. Alex Szalay, Julian Bunn, Jim Gray, Ian Foster, Ioan Raicu. "[The Importance of Data Locality in Distributed Computing Applications](#)", NSF Workflow Workshop 2006.

# Other Publications (disjoint set)

## (2002 – 2007)

1. Catalin Dumitrescu, Jan Dünneberger, Philipp Lüdeking, Sergei Gorlatch, Ioan Raicu and Ian Foster. [Simplifying Grid Application Programming Using Web-Enabled Code Transfer Tools](#). Toward Next Generation Grids, Chapter 6, Springer Verlag, 2007.
2. Catalin Dumitrescu, Alexandru Iosup, H. Mohamed, Dick H.J. Epema, Matei Ripeanu, Nicolae Tapus, Ioan Raicu, Ian Foster. "[ServMark: A Framework for Testing Grids Services](#)", IEEE Grid 2007.
3. Catalin Dumitrescu, Ioan Raicu, Ian Foster. "[The Design, Usage, and Performance of GRUBER: A Grid uSLA-based Brokering Infrastructure](#)", International Journal of Grid Computing, 2007.
4. Catalin Dumitrescu, Ioan Raicu, Ian Foster. "[Usage SLA-based Scheduling in Grids](#)", Journal on Concurrency and Computation: Practice and Experience, 2006.
5. Ioan Raicu, Catalin Dumitrescu, Matei Ripeanu, Ian Foster. "[The Design, Performance, and Use of DiPerF: An automated Distributed Performance testing Framework](#)", International Journal of Grid Computing, Special Issue on Global and Peer-to-Peer Computing, 2006.
6. Catalin Dumitrescu, Ioan Raicu, Ian Foster. "[Performance Measurements in Running Workloads over a Grid](#)", The 4th International Conference on Grid and Cooperative Computing (GCC), 2005
7. Catalin Dumitrescu, Ioan Raicu, Ian Foster. "[DI-GRUBER: A Distributed Approach for Grid Resource Brokering](#)", IEEE/ACM Super Computing 2005 (SC 2005)
8. William Allcock, John Bresnahan, Rajkumar Kettimuthu, Michael Link, Catalin Dumitrescu, Ioan Raicu, Ian Foster, "[The Globus Striped GridFTP Framework and Server](#)," sc, p. 54, ACM/IEEE SC 2005 Conference (SC'05), 2005
9. Ioan Raicu. "[A Performance Study of the Globus Toolkit® and Grid Services via DiPerF, an automated Distributed Performance testing Framework](#)", University of Chicago, Computer Science Department, MS Thesis, May 2005, Chicago, Illinois.
10. Ioan Raicu, Loren Schwiebert, Scott Fowler, Sandeep K.S. Gupta. "[Local Load Balancing for Globally Efficient Routing in Wireless Sensor Networks](#)", International Journal of Distributed Sensor Networks, 1: 163–185, 2005.
11. Ioan Raicu, Loren Schwiebert, Scott Fowler, Sandeep K.S. Gupta. "[e3D: An Energy-Efficient Routing Algorithm for Wireless Sensor Networks](#)", IEEE ISSNIP 2004 (The International Conference on Intelligent Sensors, Sensor Networks and Information Processing), 2004.
12. Catalin Dumitrescu, Ioan Raicu, Matei Ripeanu, Ian Foster. "[DiPerF: an automated Distributed Performance testing Framework](#)", IEEE/ACM GRID2004, Pittsburgh, PA, November 2004, pp 289 - 296
13. Sherali Zeadally, R. Wasseem, Ioan Raicu, "[Comparison of End-System IPv6 Protocol Stacks](#)", IEE Proceedings Communications, Special issue on Internet Protocols, Technology and Applications (VolP), Vol. 151, No. 3, June 2004.
14. Sherali Zeadally, Ioan Raicu. "[Evaluating IPV6 on Windows and Solaris](#)", IEEE Internet Computing, Volume 7, Issue 3, May June 2003, pp 51 – 57, 2003.
15. Ioan Raicu, Sherali Zeadally. "[Impact of IPv6 on End-User Applications](#)", IEEE International Conference on Telecommunications 2003, ICT'2003, Volume 2, Feb 2003, pp 973 - 980, 2003
16. Ioan Raicu, Sherali Zeadally. "[Evaluating IPv4 to IPv6 Transition Mechanisms](#)", IEEE International Conference on Telecommunications 2003, ICT'2003, Volume 2, Feb 2003, pp 1091 - 1098, 2003.
17. Ioan Raicu. "[Efficient Even Distribution of Power Consumption in Wireless Sensor Networks](#)", ISCA 18th International Conference on Computers and Their Applications, CATA 2003.
18. Ioan Raicu. "[An Empirical Analysis of Internet Protocol version 6 \(IPv6\)](#)", Wayne State University, Computer Science Department, MS Thesis, May 2002, Detroit, Michigan.
19. Ioan Raicu. "[Routing Algorithms for Wireless Sensor Networks](#)" Grace Hopper Celebration of Women in Computing 2002, GHC2002, 2002.
20. Ioan Raicu, Owen Richter, Loren Schwiebert, Sherali Zeadally. "[Using Wireless Sensor Networks to Narrow the Gap between Low-Level Information and Context-Awareness](#)", Proceedings of the ISCA 17th International Conference, Computers and their Applications, 2002.